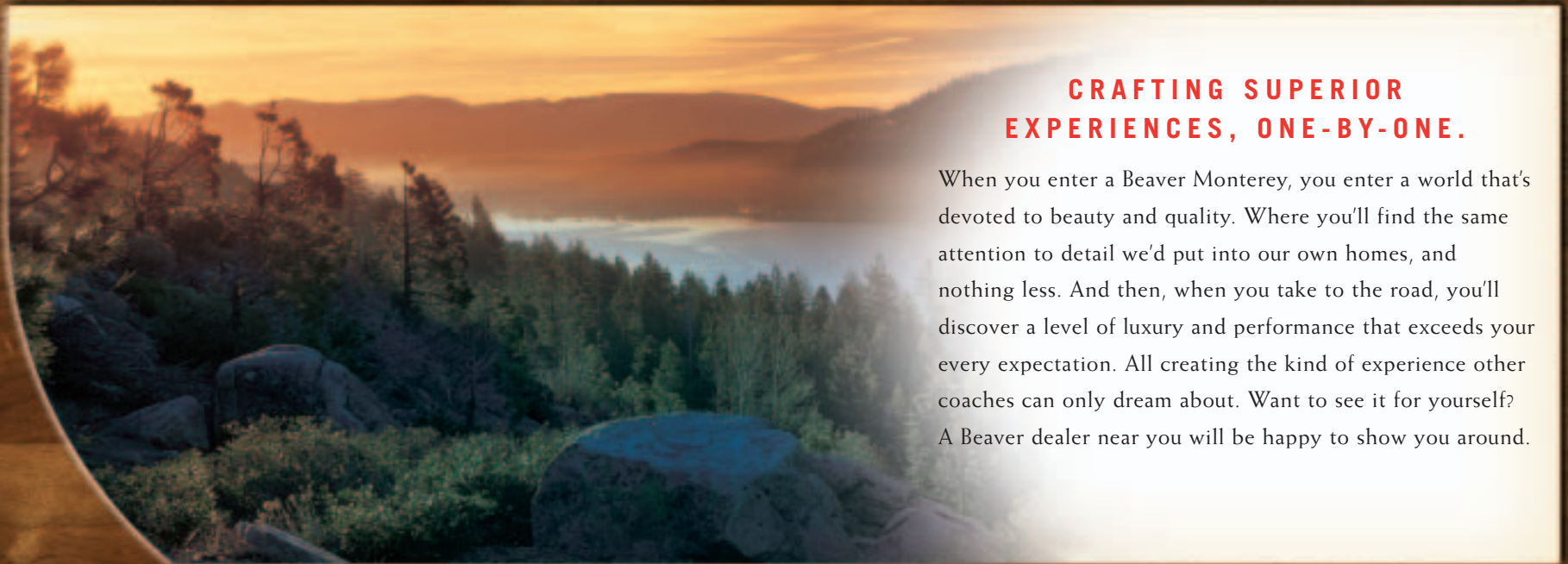


THE BEAVER FAMILY

SANTIAM | MONTEREY | PATRIOT | MARQUIS



CRAFTING SUPERIOR EXPERIENCES, ONE-BY-ONE.

When you enter a Beaver Monterey, you enter a world that's devoted to beauty and quality. Where you'll find the same attention to detail we'd put into our own homes, and nothing less. And then, when you take to the road, you'll discover a level of luxury and performance that exceeds your every expectation. All creating the kind of experience other coaches can only dream about. Want to see it for yourself? A Beaver dealer near you will be happy to show you around.

DEALERSHIP IMPRINT HERE



One Coach at a Time.

PO Box 5639
20545 Murray Road
Bend, OR 97701

1-800-634-0855

www.beavermotorcoaches.com

BEAVER **MONTEREY**04

BEAVER **MONTEREY**04





INNER BEAUTY.

At the heart of every Beaver motorcoach is a stunning interior highlighted with distinctive woodwork. Yes, you could say we have a love affair with wood — with many woods, in fact. You see, our coaches give you a wide selection of cabinet styles, from such domestic woods as oak, walnut, cherry and maple.

This is a story of craftsmanship, pure and simple. It's the story of expert cabinet builders crafting fine hardwoods to a beautiful finish. Because when you're ready to make the move to a luxury motorcoach, you're looking for the best there is.

At Beaver, we know that quality isn't something that can be faked or forged. It's right there, for you to see — in details like arched raised panel cabinet doors with hidden hinges.

Sure, in the pages ahead, you'll also see our commitment to advanced technologies and luxurious amenities. But first, we wanted to show you something you'll never find in any other motorcoach. Our craftsmanship.



One Coach at a Time.





40' Laguna shown in Coconut Grove with optional Ultraleather™ Euro-Recliner and Maple cabinetry.



Luxury that's as easygoing as you are.

Welcome to a world that's full of stylish luxury and quiet confidence. It all starts with your choice of four stunning interior decors, each with beautifully coordinated colors and fabrics. Next, you'll choose from four beautiful styles of cabinetry, featuring arched raised panel doors, satin nickel finished hardware and hidden hinges. You also have a wide choice of standard and optional furnishings, including those in our remarkable Ultraleather™ covering, designed to stand up to all the wear and tear of life on the road. Other highlights include a side-slide fixed dinette table with two freestanding chairs and two folding chairs, a cozy padded ceiling treatment and attractive decorative lighting.

MONTEREY FRONT CAP

The sleek styling of the Monterey features a one-piece molded fiberglass cap, chrome power controlled heated mirrors with turn indicator lights, and deluxe full-body paint.

TAKE A WEB TOUR

Take a virtual tour of the 2004 Monterey on our website, and put yourself in the middle of all its luxury.





MONTEREY04 40' Laguna shown in Wineberry.

With such a wide range of floorplans to choose from, there's sure to be a Monterey that's right for you.
Ventura | Huntington | Seacliff | Carmel | Coronado | Newport | Laguna



**SIMPLY PUT, THIS COACH IS
SOMETHING SPECIAL.**

When you're as popular as the Monterey, you can be sure there are some very good reasons why. Like, for instance, its remarkably smooth and powerful Roadmaster M-Series chassis and Cummins® 350 HP engine. You'll also be impressed by its wide range of floorplans — from the 36' Ventura with triple slide-outs to the 40' Laguna with its astounding quad slide-out design. And this year, the coach offers more luxury and more state-of-the-art features than ever before. This is a coach you'll love coming home to, year after year.





**WHERE STYLE AND FUNCTION COME
TOGETHER BEAUTIFULLY.**

More highlights await in the front of the coach, where over the cockpit you'll find the 24" flat screen TV, or the optional 30" LCD TV, wired through the ceiling speakers for superior audio. You can also see the comfort that greets you in the cockpit, with our Ultraleather™ six-way power seats. The co-pilot's seat gives you the option of a power footrest and comes in an optional extra-wide model.



ENTERTAINMENT CENTER

Some impressive electronic features this year include a stereo VCR and optional home theater system with DVD player, all conveniently housed in this built-in entertainment center.

40' Laguna shown
in Wineberry with
optional Maple
cabinetry.



IT'S ALL AT YOUR FINGERTIPS.

The kitchen features an easy elegance — with solid surface countertops and beautiful ceramic tile flooring (Wilsonart® plank flooring is optional). You'll find plenty of pantry space and other built-in storage features, and you'll love the high-quality appliances, including a two-door refrigerator with ice maker and raised panel doors, a versatile convection microwave and a recessed high-output cooktop with flush mount covers.

SLIDE-OUT FASCIA

Elegant crown molding combines with this intricate detail to add sophistication to the slide-out fascia.



40' Laguna shown in Wineberry with optional Maple cabinetry.



40' Carmel shown in Coconut Grove with optional Cherry cabinetry.





THE BEAUTY IS IN THE DETAILS.

You're looking at the remarkable quad slide-out 40' Laguna, featuring double slide-outs in the bedroom for more spacious comfort than you ever dreamed possible. On one side, you'll find the queen bed with sumptuous bedspread and pillows, nightstands and cabinet storage, while the other slide-out houses the roomy dresser, overhead cabinets and the 20" stereo TV with remote control. You'll also appreciate the stylish day/night pleated shades with blackout shades to help you sleep better.



BATHROOM

Highlights in the bathroom include a china toilet, mirrored medicine cabinet and solid surface countertop with integrated sink. The one-piece fiberglass shower features a decorative glass door with satin nickel frame and a single-handle shower faucet. You also have the convenience of a towel bar and cosmetic vanity lights, and a bathtub is optional.

WARDROBE

Our oversized wardrobe closet provides plenty of storage space and features these beautiful mirrored doors.

40' Laguna shown
in Coconut Grove
with optional Maple
cabinetry.



www.beavermotorcoaches.com

CENTRAL UTILITY BAY

Our insulated systems compartment gives you easy access to all your hook-up functions and includes a faucet with hot and cold water.



**TAKE THE HELM OF YOUR
NEXT ADVENTURE.**



PASS-THROUGH STORAGE

Our roomy carpet-lined storage compartments move out with the slide-out room, making it easier than ever to reach your stowed items (not available on passenger side front slide-outs). In addition, you may choose our optional storage bay slide-out trays, for the ultimate in convenience.

Slip into the pilot seat, and you'll marvel at the high-tech controls that are before you. The beautiful bird's-eye burl instrument panel features spun aluminum gauges with black bezels, and the lighted VIP Smartwheel® puts essential switches right at your fingertips. You'll appreciate the in-dash rear vision system with color monitor, AM/FM stereo and CD changer, as well as the remarkable Aladdin video coach system, allowing you to monitor fluid levels and tank capacities and track important trip information. This year, some exciting options include the Sirius satellite radio system and the advanced OnStar® mobile assistance — both requiring subscription.



COORDINATED AWNINGS

The Monterey comes equipped with a patio awning with color coordinated hardware, as well as a slide-out topper awning. A Carefree® automatic front door awning is optional, as are automatic patio awnings and a bedroom window awning.





MONTEREY04 EXTERIORS, FABRICS & WOODS



BRANDY



COCONUT GROVE



Oak



Walnut (option)



Maple (option)



Cherry (option)



TOPAZ

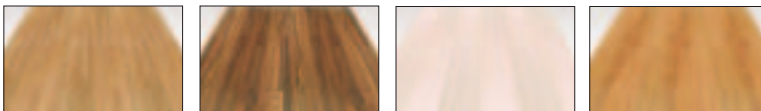


WINEBERRY

MONTEREY COLORS AND WOOD COMBINATIONS

You'll have no shortage of choices when it comes to the Monterey's beautifully coordinated colors and selection of cabinet styles. Together with a wide range of optional features, you have the opportunity to customize your coach to fit your lifestyle — creating a coach that's distinctly your own.

OPTIONAL PLANK FLOORING



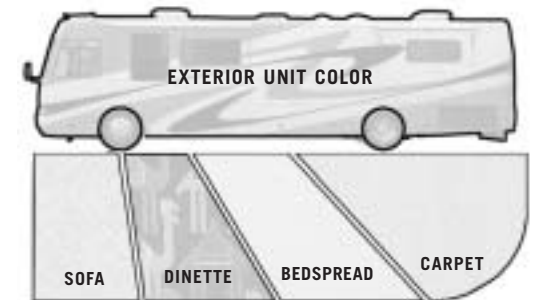
Oak Walnut Maple Cherry

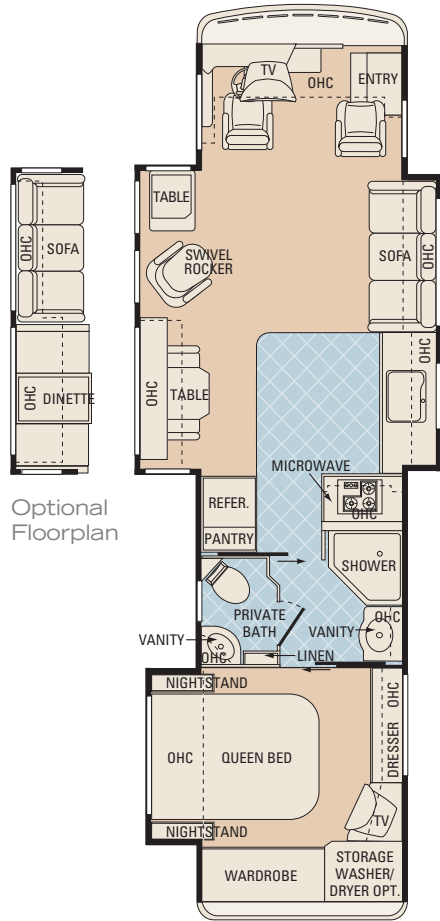


BETTER
STAIN
PROTECTION

Manufactured in, not added on. 3M Scotchgard™ Carpet Stain Release is applied during the carpet manufacturing process for a higher level of protection. Dupont Teflon® soil repellent is applied to virtually all upholstery fabric during the finishing process for superior coverage.*

*Brand and application of carpet or upholstery fabric protection may vary depending on date recreational vehicle was manufactured.





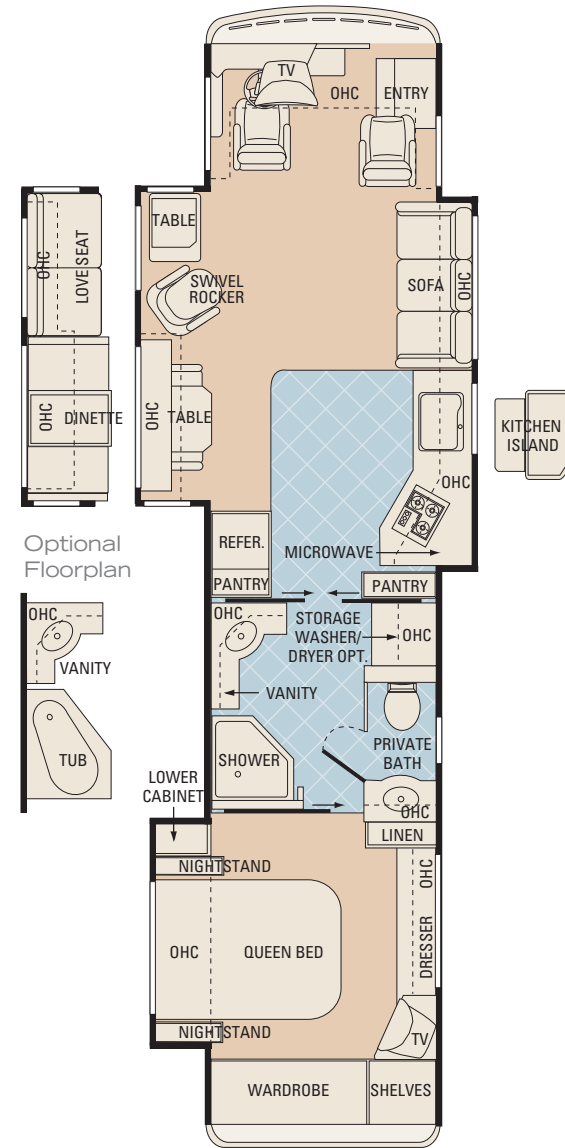
36' VENTURA



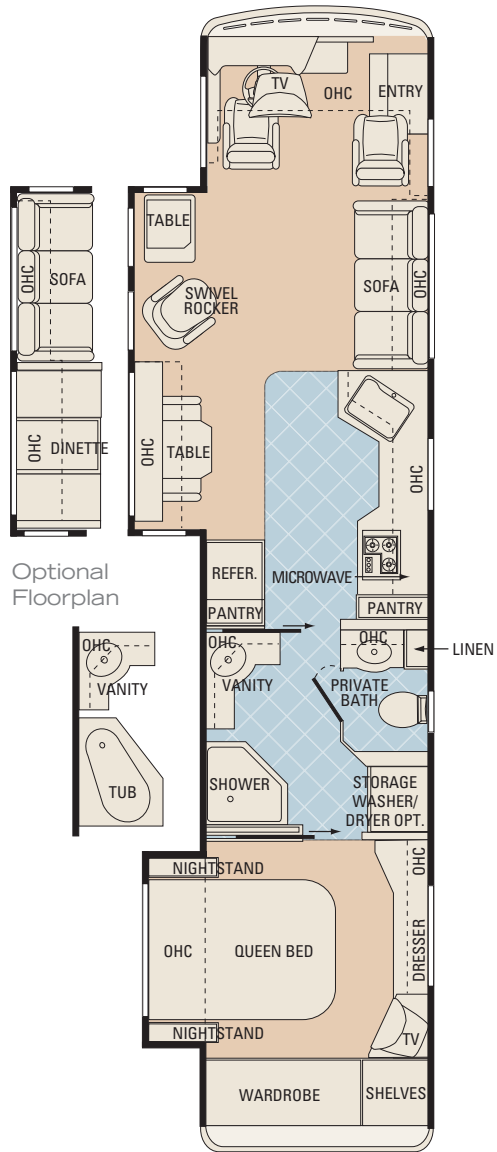
38' HUNTINGTON



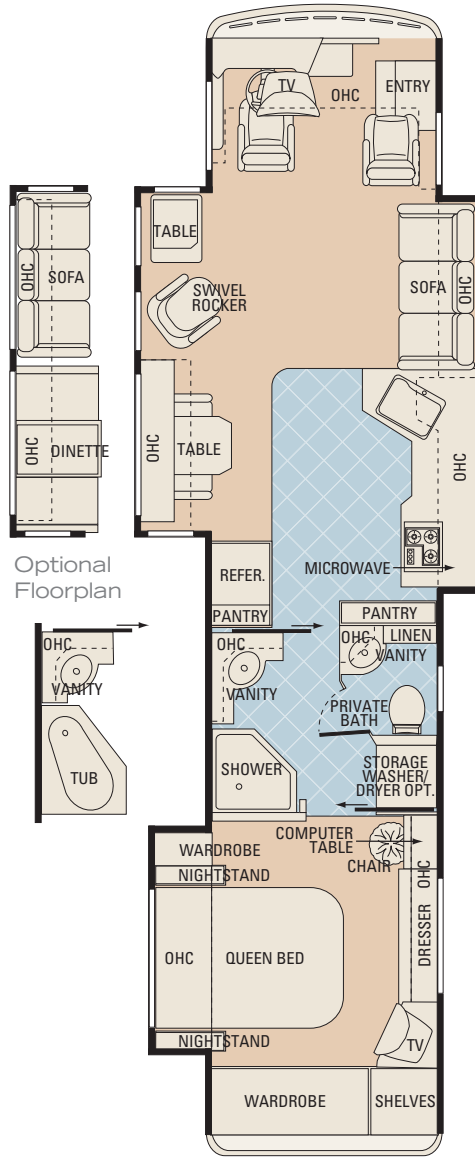
38' SEACLIFF



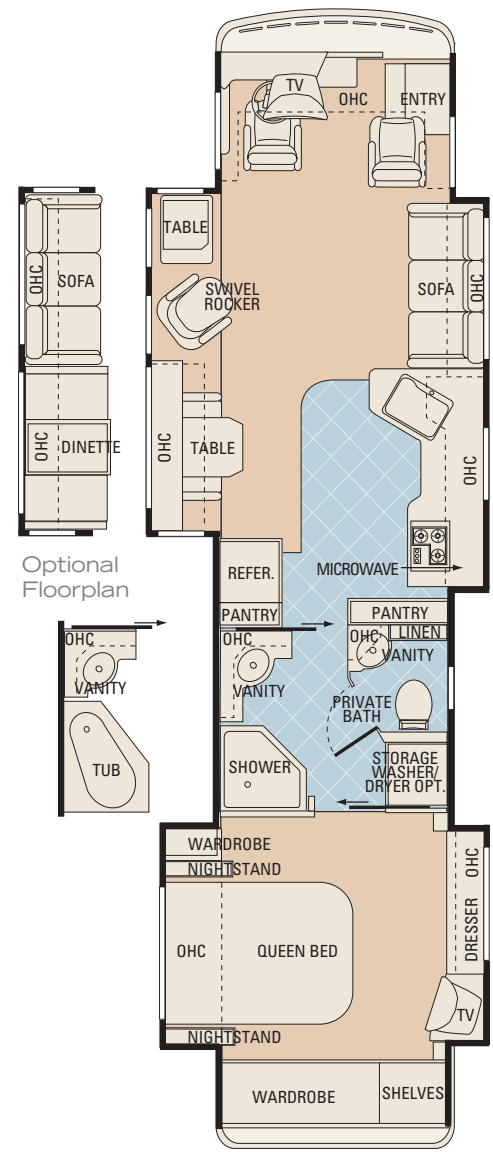
40' CARMEL



40' CORONADO



40' NEWPORT



40' LAGUNA

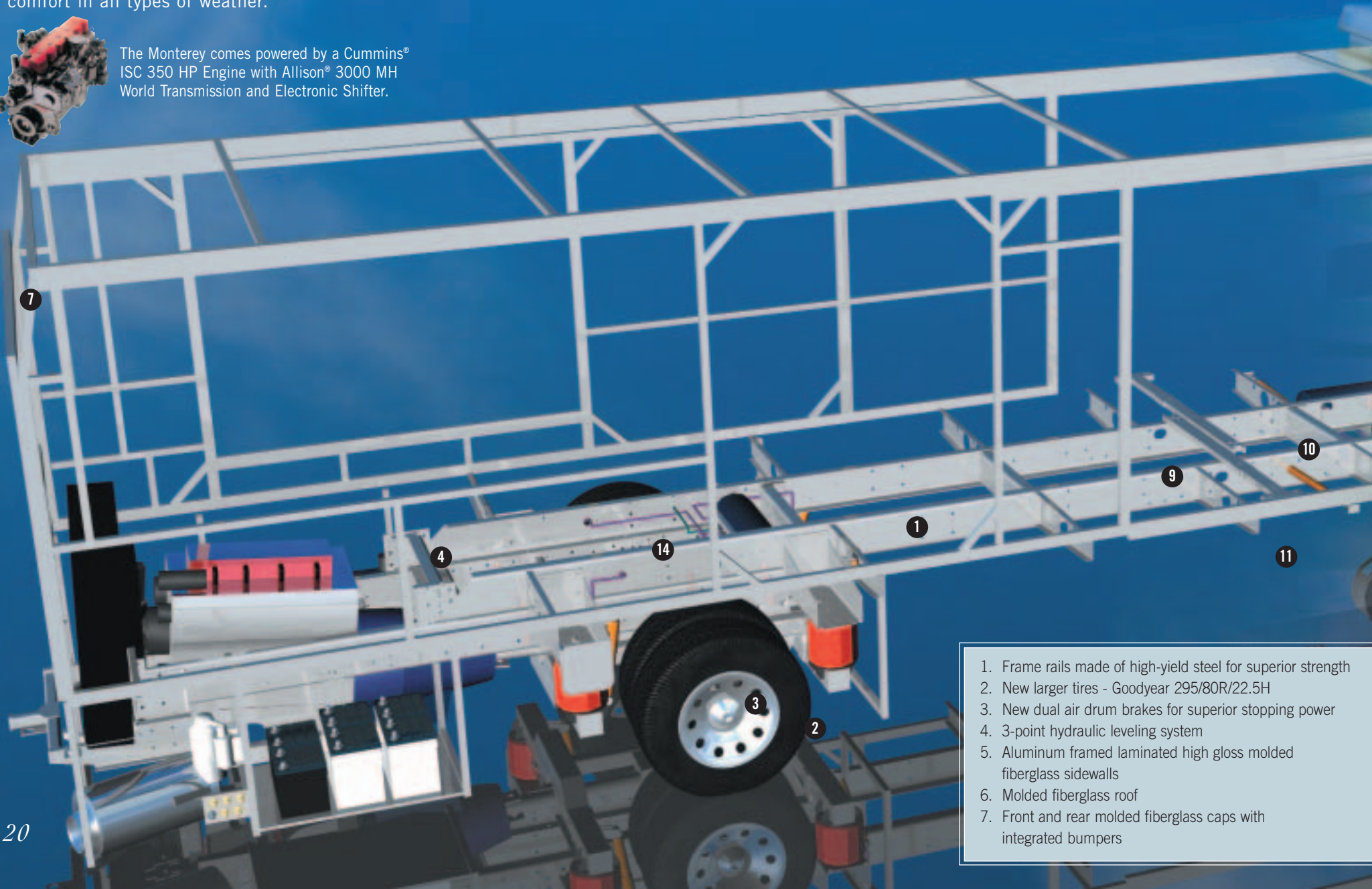
MONTEREY 04 ROADMASTER M-SERIES CHASSIS & CONSTRUCTION

WHERE COACH AND ROAD MEET IN PERFECT HARMONY.

You can rely on the Roadmaster chassis to give you the best ride and handling in the industry. Why? Because each chassis is custom-built to the exact specifications of each model of the Monterey, for a level of performance designed exclusively for a luxury motorcoach. In addition, the coach's Alumaframe® Superstructure is the lightest and most durable in the industry, while our multi-layer wall, roof and floor construction give you superior insulation — for cozy comfort in all types of weather.



The Monterey comes powered by a Cummins® ISC 350 HP Engine with Allison® 3000 MH World Transmission and Electronic Shifter.

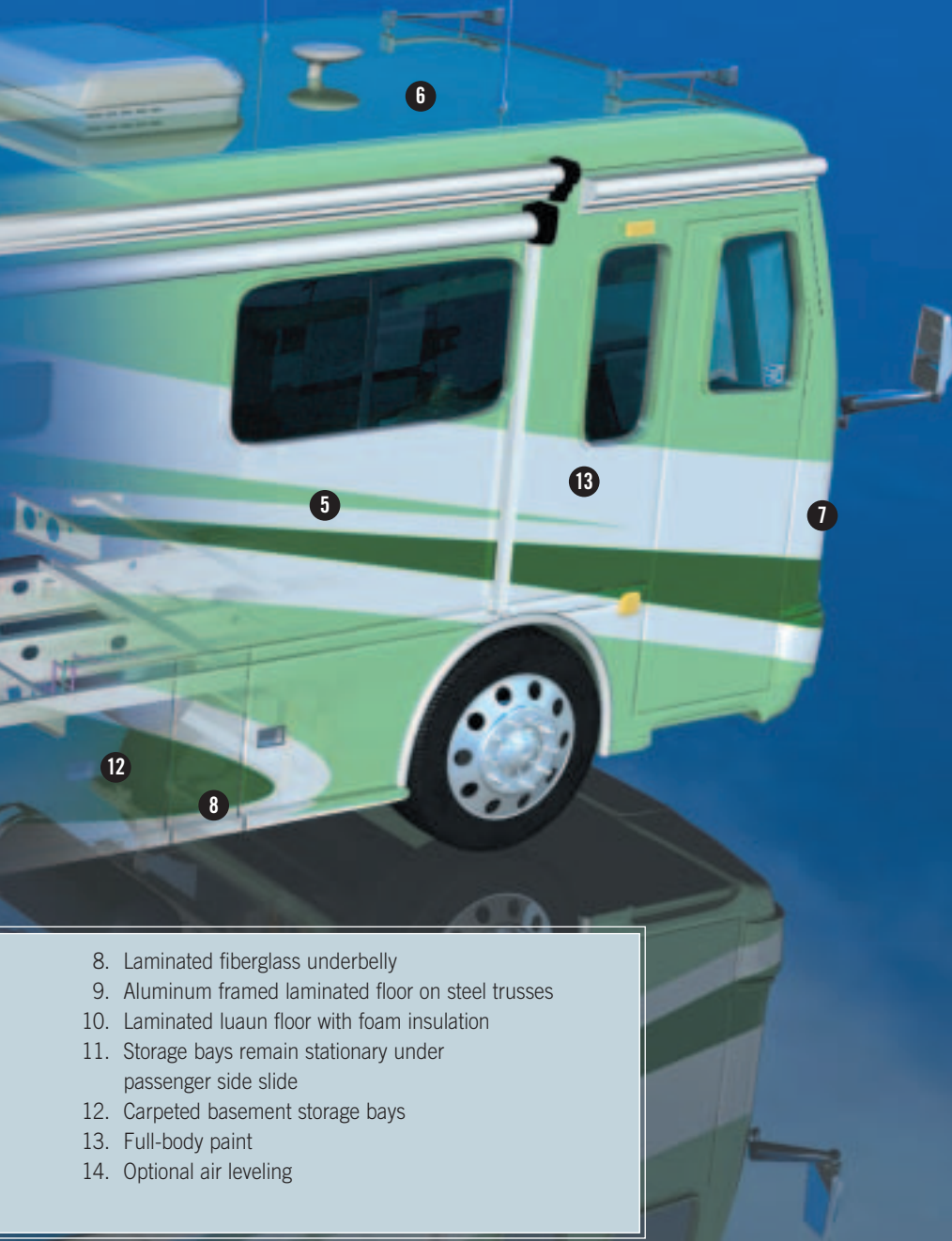


1. Frame rails made of high-yield steel for superior strength
2. New larger tires - Goodyear 295/80R/22.5H
3. New dual air drum brakes for superior stopping power
4. 3-point hydraulic leveling system
5. Aluminum framed laminated high gloss molded fiberglass sidewalls
6. Molded fiberglass roof
7. Front and rear molded fiberglass caps with integrated bumpers



ADVANCED WIRING SYSTEM

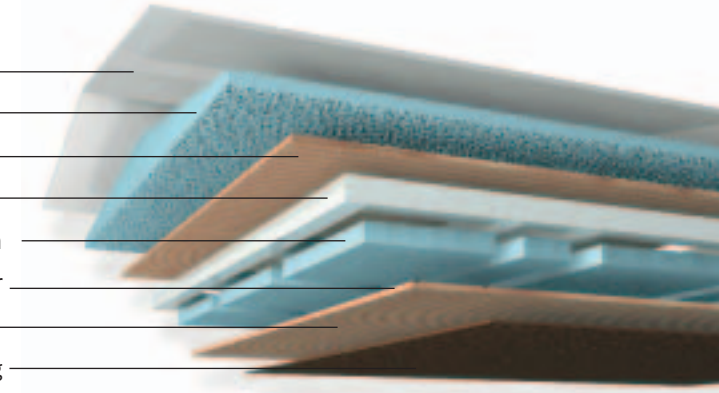
Our wiring style is inspired by the wiring used in Boeing aircraft and is unique to the RV industry. In a Beaver coach, each wire is white with pre-printed labels every three inches indicating its function. This, in conjunction with our "plug and play" harness, makes it simple to trace circuits, as well as to add or change components.



- 8. Laminated fiberglass underbelly
- 9. Aluminum framed laminated floor on steel trusses
- 10. Laminated luaun floor with foam insulation
- 11. Storage bays remain stationary under passenger side slide
- 12. Carpeted basement storage bays
- 13. Full-body paint
- 14. Optional air leveling

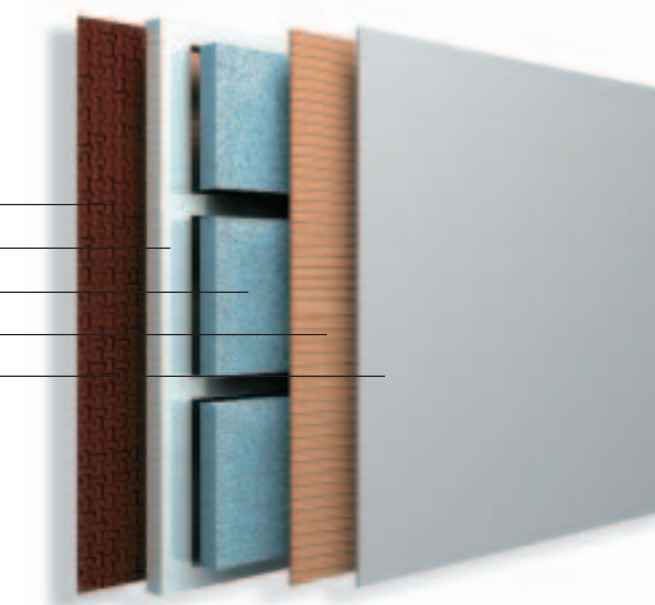
ROOF CONSTRUCTION

- Fiberglass Crown
- Tapered Block Foam
- Luaun
- Aluminum Framing
- Block Foam Insulation
- Vac-U-Bonded Barrier
- Luaun
- Padded Fabric Ceiling



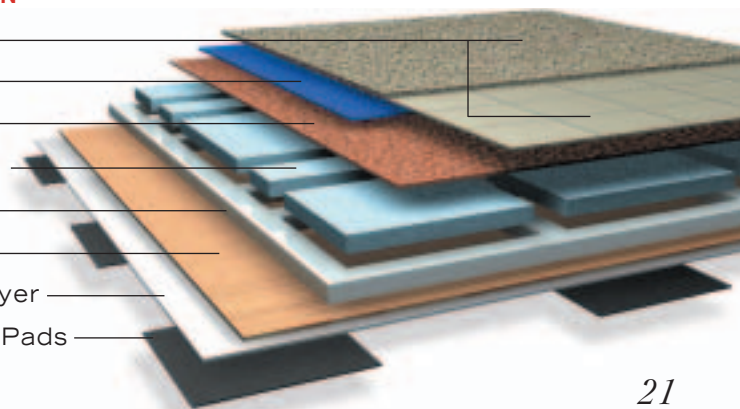
WALL CONSTRUCTION

- Wall Board
- Aluminum Framing
- Block Foam Insulation
- Luaun
- Fiberglass Exterior



FLOOR CONSTRUCTION

- Carpet/Tile
- Carpet Padding
- Structure Board
- Block Foam Insulation
- Aluminum Framing
- Luaun
- Fiberglass Outer Layer
- Harmonic Reducing Pads



BODY CONSTRUCTION**Standard Features**

- Aluminum Framed Superstructure
 - Seamless One-Piece Molded Crowned Fiberglass Roof
 - Laminated Gel Coat Fiberglass Sidewalls
 - One-Piece Front and Rear Molded Fiberglass Caps
 - Chrome Power Controlled Heated Exterior Mirrors with Turn Indicator Lights
 - Aluminum Framed Laminated Floor on Steel Trusses
 - Foam Insulated Underbelly
 - Driving Lights
 - Insulated Aluminum Pantographic Baggage Doors
 - Carpet Lined Storage Compartments Slide Out with Room (N/A on Passenger Side Front Slide-Outs)
 - Full Length Beaver Mud Flap
 - Deluxe Full Body Paint
 - Rear Ladder
- Options**
- 3M® Film Front Mask
 - Storage Bay Slide-Out Tray (Full Pass-Through) (N/A: 36' Ventura)
 - Storage Bay Slide-Out Tray (One Side)

COCKPIT**Standard Features**

- Fiberglass Automotive Dash with Bird's-Eye Burl Instrumentation Panel
- Spun Aluminum Gauges with Black Bezels
- Aladdin Video Coach System
- Multi-Position Sunvisors

- In-Dash Rear Vision System and Color Monitor with AM/FM Stereo/CD
- Adjustable Accelerator and Brake Pedals
- 110V, 12V, and Phone Outlet
- Cup Holders
- Lighted VIP Smartwheel® with Controls for Windshield Wipers, ICC, and Cruise Control
- Power Steering
- Roof Mounted Air Horns
- Ultraleather™ 6-Way Power Pilot and Co-Pilot Seats
- Air Activated Power Step Well Cover
- Manual Privacy Cab Drapes
- Carpet Pilot and Co-Pilot Floor Mats

Options

- Co-Pilot Seat with Power Footrest
- Extra-Wide Co-Pilot Seat with Power Footrest
- Power Privacy Cab Drapes
- Power Sunvisors
- 6-Disc CD Changer
- CB Radio
- Cellular Phone Wiring and Antenna
- Sirius Satellite Radio System (Requires Subscription)
- OnStar® Mobile Assistance (Requires Subscription)

APPLIANCES AND ACCESSORIES**Standard Features**

- Two-Door Refrigerator with Ice Maker and Raised Panel Doors
- High-Output Three-Burner Recessed Cooktop
- Convection Microwave with Touch Control

- 24-Inch Flat Screen TV with Remote in Living Area
- 20-Inch Color Stereo TV with Remote in Bedroom
- Stereo VCR
- Video Control Box with Dual Exterior Hook-Ups for DSS Dish and Cable
- Living Area Stereo TV and VCR Wired through Ceiling Speakers
- TV Antenna and Booster
- Prep for Satellite Receiver
- Cable TV Hook-Up and Telephone Jacks
- Washer/Dryer Prep

Options

- 30-Inch LCD TV in Living Area with Built-In Tuner
- Four-Door Refrigerator with Ice Maker and Raised Panel Doors
- Four-Door Stainless Steel Refrigerator with Ice Maker
- Stainless Steel Microwave
- Recessed Cooktop with Oven (N/A: 36' Ventura)
- Combination Washer/Dryer
- Fully Automatic Digital Satellite System
- Home Theater System with DVD Player
- Central Vacuum System

INTERIOR**Standard Features**

- Rift White Oak Cabinetry
- Arched Raised Panel Cabinet Doors with Hidden Hinges
- Carpet Lined Cabinet Shelves
- Low Friction Roller Drawer Guides
- Satin Nickel Finished Cabinet Hardware
- Solid Surface Kitchen Countertop
- Mirrors in Kitchen Area

- Ceramic Tile Floor in Kitchen & Bath
- Padded Ceiling Treatment
- Oversized Rear Wardrobe Closet with Mirrored Doors
- Solid Surface Bathroom Countertop with Integrated Sink
- Decorative Glass Shower Door with Satin Nickel Frame
- Medicine Cabinet with Shelves
- Bathroom Mirror
- Towel Bar in Bathroom
- Queen Bedspread with Pillows
- Day/Night Pleated Shades in Bedroom with Blackout Shades
- Mini Blinds in Living Area, Kitchen, and Bathroom

Options

- Decors: Wineberry, Brandy, Topaz, Coconut Grove
- Rustic Cherry Cabinetry
- Tight Knot Walnut Cabinetry
- White Maple Cabinetry
- Wilsonart® Plank Flooring in Kitchen and Bathroom
- Day/Night Pleated Shades in Living Area

FURNITURE**Standard Features**

- Side-Slide, Fixed Dinette Table with Two Freestanding Chairs and Two Folding Dinette Chairs
- Queen Bed with Shirt Closet and Nightstands
- Fabric Swivel Rocker
- Computer Table
- Fabric Sleeper Sofa with Drawer

Options

- Ultraleather™ Euro-Recliner with Ottoman

- Fabric Recliner
- Ultraleather™ Recliner
- Ultraleather™ Loveseat with Drawer (38' Seacliff, 40' Carmel)
- Ultraleather™ Sofa with Drawer (N/A: 38' Seacliff, 40' Carmel)
- Fabric Magic Bed Sofa
- Ultraleather™ Magic Bed Sofa
- Fabric Hide-a-Bed Sofa with Air Mattress
- Ultraleather™ Hide-a-Bed Sofa with Air Mattress
- Booth Dinette
- Kitchen Island (40' Carmel)
- Wrap Around Computer Table (Requires Recliner)

ELECTRICAL SYSTEMS AND LIGHTS

Standard Features

- 50 Amp 120V Distribution Panel
- Onan® 7.5 kW QD Diesel Generator with Hour Meter on Power Slide-Out
- 2000 Watt Inverter
- Solar Panel
- Two 12V Chassis Batteries
- Four 6V Deep Cycle Coach Batteries
- Battery Disconnect Switches
- Power Entry Step with Light
- Lights in Outside Storage Compartment
- 120V Receptacles inside Storage Compartment
- Computer Hook-Up with Phone Jack in Dinette Area
- Fluorescent Lighting Throughout
- Cosmetic Vanity Lights in Bathroom
- Halogen Lights under Overhead Cabinets

- Halogen Lights Mounted in Living Room Ceiling
- Decorative Lighting in Living Room and Bedroom

Options

- Power Cord Reel
- Surge Protector

PLUMBING AND LP SYSTEMS

Standard Features

- Manifold Water Control System
- Water Pump Switch in Galley Area
- Water Purifier in Ice Maker
- China Opus Toilet
- Fiberglass Shower
- No-Fuss Flush Black Holding Tank Rinsing System
- Insulated Systems Compartment with Easy Access to Hook-Up
- Outside Faucet with Hot and Cold Water

Options

- Bath Tub

HEATING, VENTS, AND AIR CONDITIONING

Standard Features

- Two Low Profile Ducted 13.5M BTU Roof Air Conditioners with Electronic Ignition and Heat Pumps
- Electronic AC/Heat Climate Control System
- In-Floor Ducted Heating System
- 12V Attic Fan in Bath
- 12V Attic Fan in Kitchen

Options

- Hydro-Hot Heating System (Required on Triple and Quad Slide-Outs)

WINDOWS, DOORS, AND AWNINGS

Standard Features

- Radius Dual Pane Safety Glass Dark Tinted Slider Windows
- Front Entry Door with Removable Screen
- Color Coordinated Patio Awning with Color Coordinated Hardware
- Slide-Out Topper Awnings
- Interior and Exterior Grab Handles
- Tinted Skylight in Bathroom

Options

- Girard® Automatic Patio Awning
- One Touch Automatic Patio Awning
- Mirage® Automatic Patio Awning with Color Coordinated Hardware (N/A: 36' Ventura)
- Carefree® Automatic Front Door Awning
- Bedroom Window Awning (N/A: 40' Laguna)

SAFETY

Standard Features

- Fire Extinguisher
- Deadbolt Lock on Entrance Door
- 120V GFI Protected Circuit (Kitchen, Bathroom, Exterior)
- LP Gas Detector
- Smoke Detector
- Carbon Monoxide Detector
- Integrated Pilot and Co-Pilot Three-Point Seat Belts (Lap and Shoulder)
- Third Brake Safety Light
- Egress Window

CHASSIS, ENGINE, AND SUSPENSION

Standard Features

- Roadmaster M-Series Chassis

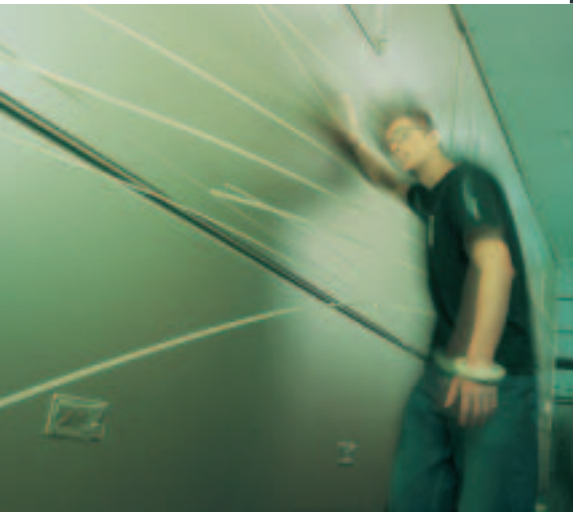
- Cummins® ISC 350 HP Engine with Allison® 3000 MH World Transmission and Electronic Shifter
- Torque: (950 lbs./ft. Max. Net at 1,400 RPM)
- Rear Axle Ratio: 4.30:1
- Cubic Inch Displacement: 504.5"/8.3L
- 140 Amp Alternator
- Dual Fuel Fill
- Accubrite Aluminum Wheels
- Tires: 295/80R/22.5
- Cushion Air Glide Suspension with Eight Air Bags and Eight Shock Absorbers
- Anti-Lock Braking System with Full Air Brakes (Drum)
- Pac Exhaust Brake
- Automatic Traction Control
- Auto Slack Adjusters
- Fuel/Water Separator
- Air Cleaner Restriction Indicator
- Engine Block Heater with Switch on Dash
- Hydraulic Leveling System
- 10,000 Lb. Hitch Receiver* with Six-Point Connector
- Undercoating

Options

- Air Leveling
- Dual Leveling
- *Your towed vehicle should be equipped with auxiliary brakes if the weight of the towed load exceeds 1,000 lbs.



**THERE'S NO RUSHING
A MASTERPIECE.**



How do we get the best-looking coaches on the road? With a painstaking paint process that's a labor of love every step of the way. After a rigorous prepping, a new coach is brought to our paint booth, where it's wiped down and sealed with an adhesion promoter. Then a basecoat is applied, and after drying, each of the coach's colors are applied and inspected. The coach's durable finish includes three clear coats that are baked at 130° and then buffed to a high gloss. And finally, each coach is closely inspected by a quality control expert.



WEIGHT RATINGS (LBS.)	36' VENTURA	38' HUNTINGTON	38' SEACLIFF	40' CARMEL	40' CORONADO	40' NEWPORT	40' LAGUNA
Gross Vehicle	32,800	32,800	32,800	32,800	32,800	32,800	32,800
Gross Combined	42,800	42,800	42,800	42,800	42,800	42,800	42,800
Front Gross Axle	12,800	12,800	12,800	12,800	12,800	12,800	12,800
Rear Gross Axle	20,000	20,000	20,000	20,000	20,000	20,000	20,000
MEASUREMENTS							
Wheelbase	220"	244"	244"	268"	268"	268"	268"
Overall Length	36' 10"	38' 10"	38' 10"	40' 10"	40' 10"	40' 10"	40' 10"
Overall Height (with A/C)	12'	12'	12'	12'	12'	12'	12'
Interior Height	6' 7"	6' 7"	6' 7"	6' 7"	6' 7"	6' 7"	6' 7"
Exterior Width	102"	102"	102"	102"	102"	102"	102"
TANK CAPACITY (GAL.)							
Water Heater	10	10	10	10	10	10	10
Gray Tank	58	58	58	58	58	58	58
Black Tank	58	58	58	58	58	58	58
Fresh Tank	100	100	100	100	100	100	100
LP Tank*	40	40	40	40	40	40	40
Fuel Tank	99.4	109	109	109	109	109	109

All tank capacities are estimated based upon calculations provided by the tank manufacturers and represent approximate capacities. The actual "usable capacity" may be greater or less than the estimated capacities based upon fabrication and installation of the tanks.

*Actual filled LP capacity is 80% of listing due to safety shut-off required on tank.

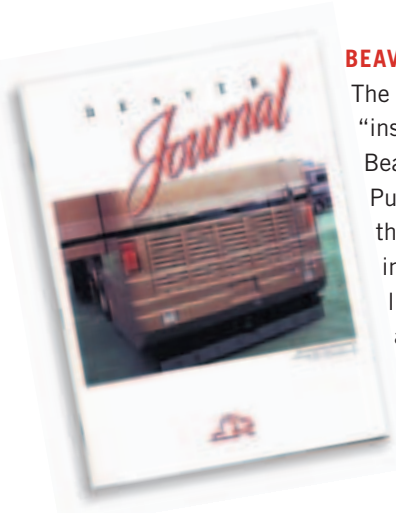
Due to the large variety of options and floorplan arrangements available to our customers, actual weights for each unit may differ. Beaver Motor Coaches provides a weight sticker on each unit we produce, which includes that unit's tank capacities and approximate weight. Consult your local Beaver Motor Coaches dealer for unit availability and further information. The information printed in this brochure reflects product design, fabrication, and component parts at the date of printing. The manufacturer reserves the right, at any time, to make changes in product design, material or component specifications as its sole option, without notice. This includes the substitution of components of a different brand or trade name, which will result in comparable performance. All information printed in this brochure is subject to change after the date of printing. Some features shown or mentioned in this brochure are optional and may only be available in selected floorplans. Photographs may show props or decorations that are not standard equipment on Beaver Motor Coach models. Beaver Motor Coaches, the Beaver logo and its design, are registered trademarks. All other products and company names are trademarks and/or registered trademarks of their respective holders.

The actual overall length of the recreational vehicle may differ from that indicated in the brochure due to variances in the manufacturing process and/or installed components. The actual length may be greater or less than that indicated.



“ATTENDING RALLIES HAS TO BE THE BEST PART OF THE MOTORHOME LIFESTYLE”

As a Beaver owner, you’re invited to join the exclusive Beaver Ambassador Club (BAC) and enjoy the camaraderie of other Beaver owners who share your interests. Founded in 1984, the club now boasts more than 1700 active members and offers a wide variety of events and rallies to allow you to share experiences, learn from the experts, and above all, have fun!



BEAVER JOURNAL

The Beaver Journal is an “insider’s view” designed for Beaver Motor Coach enthusiasts. Published every two months, the Journal is filled with information on motorhome living — including technical advice, travelogues, and a complete listing of upcoming rallies and activities.



WELCOME HOME

Monaco Coach Corporation and Beaver Motor Coaches team up for “homecoming” galas each year. These factory-sponsored rallies feature informative seminars, new coach previews, world-class entertainers, golf tournaments, catered meals, and much more.



KEEPING YOU CONNECTED

During your first year of ownership, you’ll have access to free 24-hour emergency assistance, including towing and road service. Another outstanding resource is our website. At www.beavermotorcoaches.com you’ll find a world of up-to-date information and have the opportunity to contact us directly.





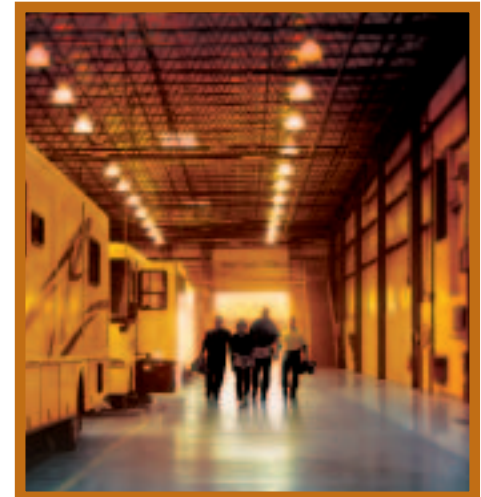
WHEREVER YOU TRAVEL, YOU'RE ALWAYS PART OF THE FAMILY.

When you purchase a coach from Beaver, you become part of an industry-leading family of companies called Monaco Coach Corporation. What does that mean for you? It means you have access to a wider array of benefits. To begin with, your coach is built by a level of expertise that could only be achieved through the teamwork and combined experience of all our companies. Like, for example, such exclusive innovations as the Roadmaster chassis,



designed specifically for each individual model of our diesel coaches. You also get the benefit of our White Glove factory inspection program, for a higher level of quality assurance and added peace of mind. And your dealer will be happy to tell you about our other innovative programs, including our Extended Care service agreements.

Of course, once you're on the road, you'll have access to our nationwide network of more than 350 service facilities, meaning wherever you travel, you're never far from a friend. Ready to roll? In a 2004 Beaver, the strength of our entire family is behind you every mile of the way.



350 and growing | **Service Facilities Nationwide**

WARRANTIES

12 MONTH/24,000 MILE
basic limited warranty

5 YEAR/50,000 MILE
limited warranty on aluminum or steel frame structure of sidewall, roof, front and rear cap

3 YEAR/36,000 MILE
limited warranty on Roadmaster chassis

See owner's manual for complete details.



MONACO COACH CORPORATION