

Coachmen



Easy to Use. Really.

Pete, the Coachmen mascot, symbolizes our commitment to being your best friend on the road. Like Pete, we're always there to make sure everything about your Coachmen is as easy and uncomplicated as possible, so you can escape from the hassles and worries of everyday life and enjoy RVing.

Easy to Own. Honest.

At Coachmen, our commitment to you is your ongoing satisfaction. Our dealers are authorized to solve your problems on the spot and get you on your way without fuss, hassle or red tape. Also, should you ever need service or repair, it is easy to find one of the hundreds of Coachmen dealers or authorized repair centers nationwide.

All information contained in this brochure is believed to be accurate at the time of publication. However, during the model year, it may be necessary to make revisions and Coachmen reserves the right to make all such changes without notice, including changes in prices, colors, materials, equipment and specifications, as well as the addition of new models and the discontinuance of models shown in this brochure. Therefore, please consult with your Coachmen dealer and confirm the existence of any materials, design or specifications that are material to your purchase decision.

COA-78 11.07 Printed in USA



Coachmen Recreational Vehicle Company, LLC
P.O. Box 30, Middlebury, IN 46540

Your Coachmen will be easy to buy, easy to use and easy to own. That's our promise to you. We accomplish this in big ways through clever designs and superior support after the sale. But the real measure of being "easy" is the countless thoughtful touches we include throughout your new Coachmen.

Our toll-free service hotline (800-453-6064) and online service support center provide you access to a Coachmen service representative as well as access to warranty coverage information, maintenance information, troubleshooting tips, dealer locations and other helpful information on demand. We're with you every step of the way. Coachmen. You couldn't ask for an easier traveling companion.



Easy to Enjoy. Seriously.

Just for purchasing a new Coachmen RV, we'll give you the valuable gift of a one-year membership in the Coachmen Owners' Association (C.O.A.). This means tons of awesome benefits designed to give you maximum enjoyment from your coach.

You'll enjoy exclusive discounts at campgrounds, theme parks, gas/diesel/LP fuel, magazines, and much more. You'll also get concierge service 24/7, enabling you to find and buy what you need, often at big discounts!

Other benefits include trip routing, vacation packages, event reservations, mail forwarding and our helpful owners magazine - Easy RVing. Plus annual camping events and support network and services for first-time RV buyers.

As the owner of any Coachmen recreational vehicle, we invite you to take advantage of your C.O.A. membership today by calling 888-422-2582.

To see how Coachmen is making the easy life even easier, visit www.easyRVing.com or call 1.800.353.7383.

COACHMEN | 2009 MIRADA CLASS A MOTORHOMES



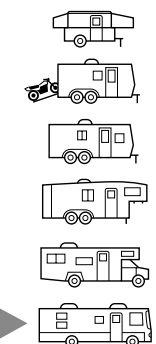
2009 Coachmen **Mirada™**
Make It a Family Affair.



Step right up to Mirada!



Ready to step up to the motorhome lifestyle? Then you're ready for Mirada! Mirada combines fresh good looks with all the comfort and convenience you'd expect from a Coachmen motorhome. What's more, Mirada is packed with fun, family-friendly features you won't find on competitors' coaches. And Mirada is backed up by Coachmen's warranty and a nationwide network of service centers. For easy-living style and trouble-free convenience wherever the road takes you, Mirada is the easy choice. And it all comes at a remarkably friendly price to make buying easy as well.



Mirada™



Spacious interiors, residential amenities and easy to use features are hallmarks of the Mirada. The 355TS shown here, offers spacious living with dual sliderooms in the coach area. There is plenty of seating with both sofa and loveseat, along with a forward facing 26" LCD television to entertain your family and guests.



Mirada Class A Motorhomes

Features that matter.



EASY STORAGE

With Mirada, the easy life always goes with you. It has all the storage space you could need, including a huge easy lift-up under-bed storage, and large exterior cargo compartments that hold enough gear for a weekend at the campground or a week in the Rockies.



EASY ENTERTAINING

From the optional surround sound system and DVD player, to the large LCD flat screen TV (most models), Mirada makes all your travels fun-filled, and simple to enjoy. The 350DS bunk house model even has a standard 15" LCD TV in the bunk area to keep the kids entertained.



Visit our website anytime at www.easyRVing.com for more information, and easy shopping tools like



- Finding the right Coachmen for you.
- Comparing different Coachmen models.
- Building your own RV.



2009 Coachmen Mirada™ Easy.

Make It a Family Affair.

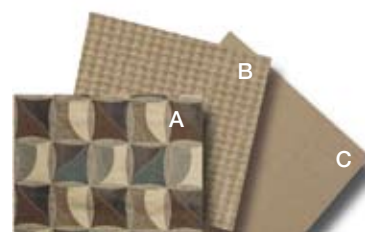


Whether you're living in it, or driving in it, the Mirada is designed to make your life easy. Shown here is the 355TS with new designer ceiling treatments to make lounging more fun, and reclining/swivel captains chairs to make road time easier. And we moved the LCD TV into the living area so you can entertain without obstructing the view through the one piece windshield.

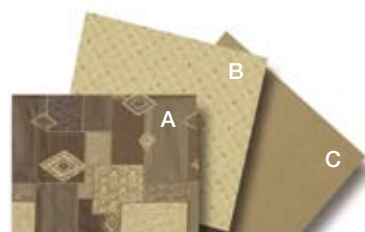
Decor Choices

FABRIC KEY
A. Main B. Accent C. Bedspread

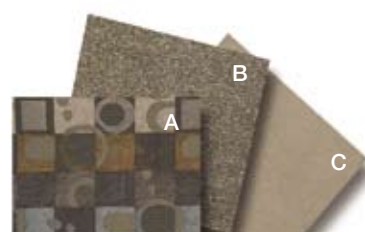
Coachmen's dazzling interiors feature top-grade fabrics that have been tested for maximum durability.



NEWPORT MOCHA



TIMBER RIDGE TAUPE



PARKVIEW PEWTER



LAKESIDE MAPLE



BRAZILIAN CHERRY

Easy Features

LIVING APPOINTMENTS

- S Lakeside Maple cabinetry
- O Brazilian Cherry cabinetry
- S Hardwood cabinet doors and drawers
- S Carpet (living and bedroom)
- S Linoleum (kitchen and bathroom)
- S Designer countertops
- S Techwood drawer sides
- S Residential metal drawer guides
- S High spout kitchen faucet
- S Stainless steel double bowl kitchen sink
- S Silverware/utensil drawer
- S Jackknife sofa
- S Rear jackknife sofa (355TS)
- S Euro lounge chair (310DS, 350DS)
- S Deluxe sofa with hide-a-bed (n/a 315SA)
- S Reclining/swivel captains chairs
- S Soft Touch seating upgrade (includes sofa and captains chairs with power drivers seat)
- S Booth dinette
- S Dream dinette table
- S Residential dinette (2 traditional and two folding chairs)
- S Passenger side computer hookups
- S Pleated shades

SLEEPING APPOINTMENTS

- S Queen bed with innerspring mattress (n/a 355TS)
- S Queen flip down wall bed with sofa (355TS)
- S Bedspread
- S Bunk beds in hall (350DS)
- S Hide-a-bunk/sofa (350DS)
- S Windshield privacy drape

COCKPIT APPOINTMENTS

- S Cruise control
- O Tilt steering wheel
- S Dash air conditioning
- S Rear vision camera with dash monitor
- S Side vision cameras
- S Driver/passenger wall mounted cup holders
- S Defroster assist fans with dash switch
- S Heated exterior mirrors with remote
- S Two 12-volt power outlets in dash

APPLIANCES AND ACCESSORIES

- S 26" LCD TV — coach (n/a 315SA)
- S 26" Flat screen TV — coach (315SA)
- S 26" LCD TV — bedroom (355TS)
- S 20" flat screen TV — bedroom (n/a 355TS)
- O 15" LCD TV with DVD (350DS bunk area)
- S DVD player
- O AM/FM stereo with CD player
- S Surround sound system with DVD player
- S Phone jack
- S Cable TV jacks
- O Prewire for satellite antenna
- S TV antenna
- S Microwave oven
- S Convection microwave oven
- S 3-burner high output range with oven
- S Range hood with light
- S Range cover
- S Double door refrigerator
- O Deluxe double door refrigerator

HEATING AND AIR CONDITIONING

- S 30,000 BTU E.I. furnace (n/a 355TS)
- S 35,000 BTU E.I. furnace (355TS)

Two - 13,500 BTU ducted roof air conditioners

Power bath vent

ELECTRICAL AND LIGHTING

- S 50 amp power cord
- S 55 amp, 110/12-volt power converter
- S 2 deep cycle coach batteries
- S Battery disconnect
- S GFI circuit
- S Outside recept
- S Patio light
- S 6.5 KW gasoline generator
- S Generator start switch at dash
- S Coach command center
- S Lighted storage boxes with switch at entry door
- O Entry step switch panel

PLUMBING AND LP SYSTEMS

- S Porcelain toilet with foot flush
- S One-piece ABS tub surround
- S 6-gallon (gas/electric) water heater
- S Demand water pump
- S Skylight over the shower
- S Water heater by-pass
- S Textured glass shower door
- S Whole house water filter system*
- S Black tank rinse system
- S Heated/enclosed holding tank compartments
- S No Mess™ termination system
- S Water Works™ utility panel
- S Sewer hose

EXTERIOR AND CONSTRUCTION

- S Partial paint exterior graphics
- S Full paint exterior graphics
- S Radial tires

Rear mud flaps

- S Crowned and laminated roof
- S TPO roof covering
- S Bus style baggage doors
- S Metal trunk boxes with felt lining
- S Custom fiberglass front and rear cap
- S One-piece windshield
- S Radius entry door
- S Automatic power entrance step
- S Entertainment plug-ins in exterior trunk box
- S Semi-auto hydraulic leveling jacks
- S Patio awning
- S Slideroom awnings
- S 5,000 lb. towing hitch
- S Roof ladder
- S Stainless steel wheel liners
- S Tinted safety glass windows
- S Thermopane windows
- S CSA upfit (mandatory for all Canadian provinces)

SAFETY AND SECURITY

- S LP leak alarm and smoke detector
- S Carbon monoxide detector
- S Fire extinguisher
- S Dead bolt lock — entrance door
- S Emergency start switch
- S Three point seat belts
- S Spare tire (350DS, 355TS)
- S Owners information package

S = Standard

O = Optional

* Not available on units shipped to Canada

= Easy Feature

Always making RVing easier!

Peace of mind and convenience are key ingredients to an easy, enjoyable RVing experience. In these areas Mirada stands high above other motorhomes in this category.



Mirada lets you know what's happening: Up front you can see the road close up with our smartly angled Sight Rite™ high-visibility dash. Side mirrors easily adjust from the driver's seat for easy lateral visibility, and a standard rear observation system with dash monitor means there's a confident rear view.



Peace of mind starts on the road with our one-piece windshield and hidden, horizontal wipers. These give an unobstructed view of the road at all times.



What's more convenient than giving the kids their own permanent sleeping place? You've got it with the bunk bed/entertainment zone available on our 350DS model.



Forget the messy job of connecting and disconnecting the sewer hose. Our No Mess™ termination system and its swivel boom make hose storage and dumping easy. Paired with our Water Works™ utility panel that makes all filling draining and winterizing simple, you will know that all your water systems are clean, safe and easy to handle.



Don't worry about which side of the gas pump you pull up to. Mirada's fuel fill is in the rear of the coach where you can reach it from both sides (Select models).

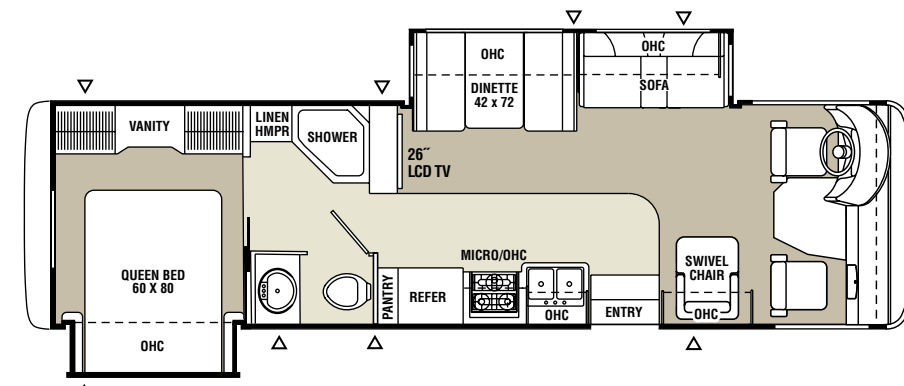


Efficient, convenient to use and easy on the eye, the galley sports all the important amenities of home, including a space-saving under-sink silverware drawer.

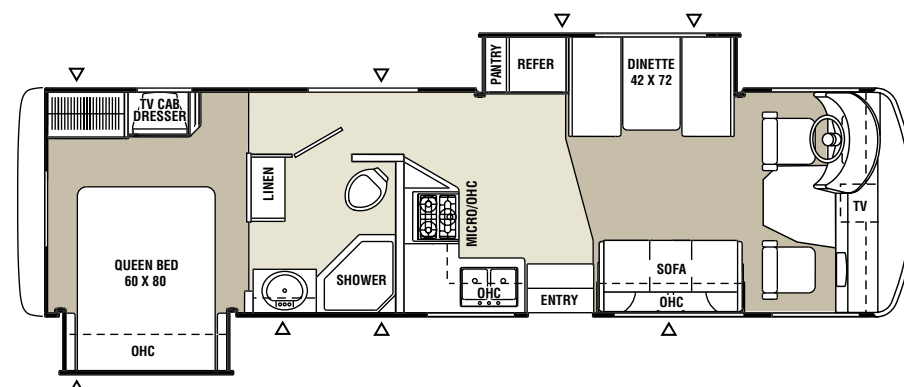
If you need to find a switch or a gauge, it's probably here in the easy to use central command panel.



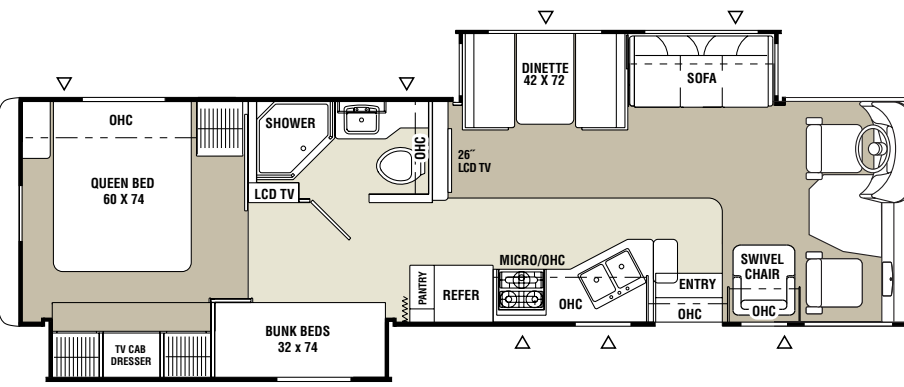
Mirada — Easy Living Floorplan



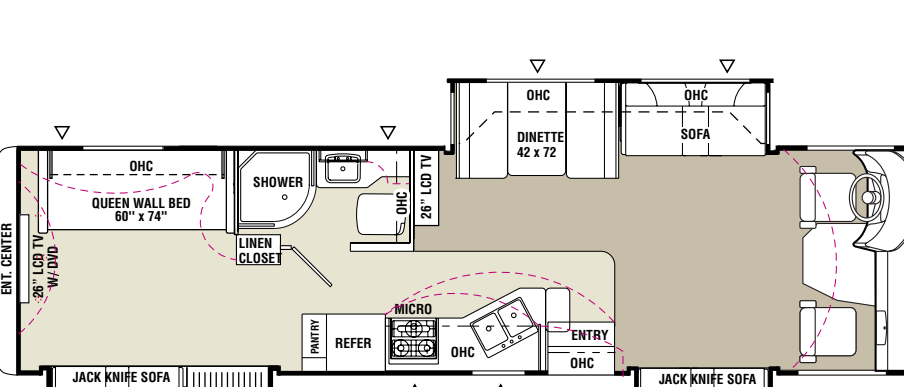
310DS | Exterior Storage: 120 cu. ft. | Sleeps 5



315SA | Exterior Storage: 120 cu. ft. | Sleeps 4



350DS | Exterior Storage: 150 cu. ft. | Sleeps 5



355TS | Exterior Storage: 150 cu. ft. | Sleeps 6

Carpet Linoleum Outside Storage Location Designer Ceiling Treatments

Partial Paint Graphics



Gray



Tan

Full Paint Graphics



Black



Brown

MIRADA

Specifications	310DS	315SA	350DS	355TS
Chassis	Ford	Ford	Ford	Ford
Chassis model	F-53	F-53	F-53	F-53
Engine size	V10-6.8L	V10-6.8L	V10-6.8L	V10-6.8L
Wheel base	228"	228"	242"	242"
Rear axle ratio	5.38	5.38	5.38	5.38
Tire size	X	X	X	X
GVWR (lbs.)	20,500	20,500	22,000	22,000
CW (lbs.)	16,560	16,800†	17,284	18,160†
GAWR front (lbs.)	7,000	7,000	7,500	7,500
GAWR rear (lbs.)	13,500	13,500	14,500	14,500
GCWR (lbs.)	26,000	26,000	26,000	26,000
Exterior length	32'7"	32'7"	34'10"	34'10"
Exterior height**	12'1"	12'1"	12'1"	12'1"
Exterior width	8'3"	8'3"	8'3"	8'3"
Exterior storage capacity (cu. ft.)	120	120	150	150
Sleeping capacity	5	4	5	6
Interior width	96"	96"	96"	96"
Interior height	80"	80"	80"	80"
Fuel capacity (gal.)	75	75	75	75
Fresh water capacity (gal.)	80	80	80	80
Waste water capacity (gal.)	45	45	45	45
Grey water capacity (gal.)	48	48	48	48
Water heater capacity (gal.)	6	6	6	6
LP gas capacity (lbs.)	85	85	85	85
Furn. rating (x 1,000) BTU	30	30	30	35

† = Estimated

X = 245/70R19.5F

** Includes clearance for air conditioner

GVWR (Gross Vehicle Weight Rating): The maximum permissible weight of the unit, including the UVW plus all fluids, cargo, optional equipment and accessories. For safety and product performance, do not exceed the GVWR.

CW (Curb Weight): The weight of the unit without factory or dealer installed options, plus allowance for the weight of full fuel capacity. The "payload capacity" for all other fluids, cargo, occupants, optional equipment, and accessories can be determined by subtracting the CW from the GVWR.

GAWR (Gross Axle Weight Rating): The total weight of each front/rear axle, suspension and tire system is designed to carry. When loading the unit, care should be taken to balance cargo weight in consideration of the GAWRs.

GCWR (Gross Combined Weight Rating): The maximum total weight of the loaded unit, plus a tow vehicle. This includes the weight of both the unit and tow vehicle, fuel for each, all other fluids, cargo, occupants, optional equipment and accessories.

Wider Widths: Numerous Coachmen floorplans feature the "wide body" design concept, which gives you significantly enhanced interior living space and innovative floorplans.

In making your purchase decision, you should be aware that a few states restrict access on some or all roads within the state to vehicle with a maximum 96" width, although special road usage permits may be available. Vehicles

up to 102" in some width are permitted in the vast majority of states. You should confirm the road usage laws in the states of interest to you before making your purchase decision. If width is of concern to you, we invite you to consider the broad array of other Coachmen models offers in the standard 96" width.

Important Note: All capacities are approximate, and all dimensions are nominal. Coachmen motorhomes are designed to allow for a wide variety of uses, extended trips with two people or short trips with multiple people. Accordingly, each unit allows ample room for sleeping, seating, fluids and cargo. While the customer is the beneficiary of this design, the customer also bears the responsibility to select the proper combination of passengers, cargo, load, and tow vehicle without exceeding the chassis weight capabilities. Consumer may need additional braking capacity to tow loads greater than 1,000 pounds.

Seat belts should always be worn for passenger safety. Seat belts are provided at most locations to allow convenience in selecting which seat to occupy. However, it is not intended that all seating positions equipped with a seat belt may be occupied while the vehicle is in motion, without regard to other weight factors.

All Coachmen motorhomes are designed to ensure that the number of passengers allowed while the vehicle is in motion will always at least equal the stated sleeping capacity.

Though extra seat belts may be provided, for your safety and the proper operation of your vehicle, limit your passengers to the number allowed by the Net Carrying Capacity of your vehicle.

