



07 SIMBA® FD
FRONT ENGINE DIESEL
& TOY HAULER



Live out **loud.**



Full throttle. Big air. All out. That's how you like to play. Just like when you were a kid, only now, you have better toys. The 2007 Simba front engine diesel toy hauler has lots of cool features with no worries. So you can concentrate on having fun — whether it's a quick daytrip, a week away or a total way of life. So pack up your gear, load up your toys and round up your friends. It's time to play.

Yeeehaaaa!





LIVIN' LARGE.

Introducing the all new Simba Toy Hauler from Safari — the first toy hauler in its class with a full-size, rear-loading hydraulic lift gate. The trick is its ingenious front engine design. That's right, the Cummins® 300 HP diesel engine is in the front of the coach. And, it's mounted a lot lower which means more room in the cockpit. But the real story is the huge loading lift gate. Specifically... a hydraulic aluminum lift gate that measures 72 inches deep and 78 inches wide with an extra 18-inch aluminum flip extension. Now that's serious room for some big toys.



THE PERFECT SETTING FOR A GOOD TIME.

You know you're going to have a ball outside, but when weather, darkness or sheer exhaustion force you inside, the good times don't end with Simba. There's plenty of room, a fully loaded kitchen and lots of super comfy furniture. One of the coolest things about this coach is the four driver-style seats in the cockpit. So four people can hang up front while driving or when kicking back and watching TV. A big LCD TV comes standard with a DVD player, CD player and radio with Sirius-ready capability. When it's time to crash, a push of the button lowers an Electro-Majic™ bed that sleeps two. That doesn't include the 80-inch sleeper sofa or the sleeping options in the storage area. So with Simba, everybody's welcome.

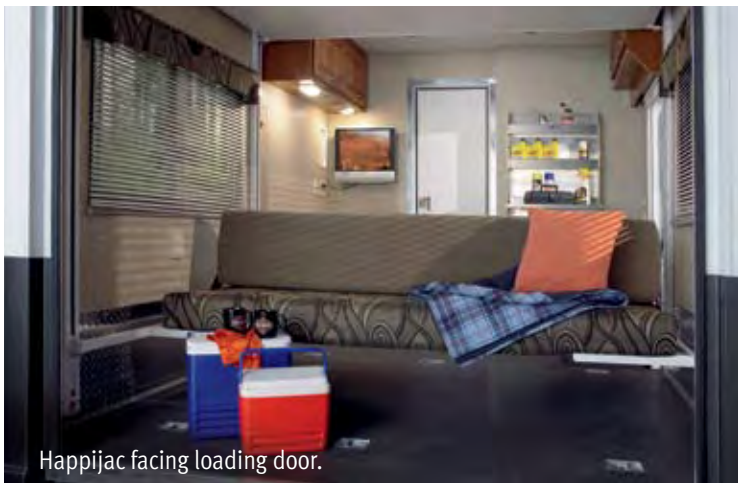




TRY THIS ON FOR SIZE.

How cool is this? Pick up the remote, push a button and the hydraulic lift gate lowers. Load up to 3,300 pounds, push another button and you're fully loaded. There's lots of room inside and it's filled with features. Like diamond plate panels on the walls. Skid-resistant Loin-con flooring for protection against oil and gasoline spills. A partition wall with door. Nine tie-downs with steel backers. And plenty of storage.





Happijac facing loading door.



Happijac facing interior door.



Fold-up bunk bed

RAISE YOUR COOLNESS FACTOR.

While the Simba toy hauler is great on its own, you can make it even better with some cool options. Make the most of the garage area by adding a Happijac bed that can be set up as a sofa, too. Flip it to face the wall, which is especially nice with the optional 20-inch LCD TV. Or flip it to face the loading door. Then add the cargo privacy screen for the perfect place to chill out and take in all the action. Or, choose the fold-up bunk beds. They drop down from the ceiling to provide lots of extra sleeping space.



Keep the action going with an optional 30-gallon fueling station with time switch and fuel gauges on the hallway system panel. And for safety, it comes with an emergency shut-off switch.







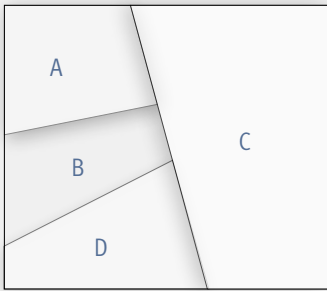
DELIVERING YOUR DREAMS.

Admit it — you dream of power and luxury. And boy, does the Simba front engine diesel deliver. It combines the power of a diesel with a spacious interior and lavish details for a unique coach that really stands out. It begins with the sizable cockpit, featuring a fiberglass automotive dash with tilt/telescopic wheel and room for an optional rear vision system. The soft touch vinyl pilot and co-pilot recliner seats provide deluxe comfort whether you're driving or enjoying a movie on the big 24" stereo TV overhead. Comfort is key throughout Simba's interior, so sit back and relax. In the kitchen, you have all the room and amenities you need, plus plenty of style. The spacious bedroom features a queen bed, picturesque windows and lots of drawer and cabinet space for personal belongings. Last, but not least, Simba's deluxe bathroom is both stylish and spacious. Add features such as a rounded shower stall with nickel trim or a central vacuum system with several plug-in locations to make Simba your own.

SIMBA FRONT ENGINE DIESEL / TOY HAULER FABRICS & EXTERIOR COLORS

DECOR CHOICES THAT ARE ANYTHING BUT ORDINARY.

Safari coaches are designed for those who see things a bit differently than most people. So when it comes to decor choices, we go beyond the ordinary to offer striking graphics, bold colors and innovative patterns. The result is a look that stands out from the crowd while maintaining a definitive sense of style. Just like you.



- A. BEDSPREAD
- B. SOFA
- C. DINETTE
- D. CARPET

VOLCANO

Available only on Toy Hauler 38STS.



POMEGRANATE



CHARCOAL



HARDWOODS OR SOFT FABRICS — THEY'RE BOTH MADE TO LAST.

One of the hallmarks of the 2007 Simba is its beautiful hardwood cabinets. With heavy-duty ball bearing drawer guides and wood cabinet drawer boxes, these cabinets are built to last. And their raised panel cabinet doors and satin nickel hardware ensure that they look good for years, too. Simba's fabrics feature stain protection that's manufactured in, not added on. Soil repellent is applied during the finishing process for superior coverage and better stain protection.

BETTER
STAIN
PROTECTION



New Vintage Oak



Newport Cherry



Champagne Select



HONEYCOMB



CLIFFSIDE



SIMBA FRONT ENGINE DIESEL / TOY HAULER 07 FEATURES & OPTIONS

BODY CONSTRUCTION

- Alumaframe® Superstructure
- Steel Cage Cockpit Construction
- Peaked One-Piece Fiberglass Roof with Fiberglass Insulation
- Smooth Gel Coat Fiberglass Exterior Walls
- Panaview™ 1-Piece Front Windshield
- Interior Height 84"
- Hydraulic Aluminum Lift Gate 72" Deep, 78" Wide, 18" x 72" x 3/8" Aluminum Flip Extension — 3,300 Lb. Capacity (38SBS, 38STS)
- Aluminum Framed Floor on Steel Trusses (N/A: 38SBS, 38STS)
- Steel Framed Floor on Steel Trusses (38SBS, 38STS)
- Nine Tie-Downs on Floor with Steel Backer (38SBS, 38STS)
- Partition Wall between Living Area and Storage Area, Door 24" Wide (38SBS, 38STS)
- Diamond Plating Material for Wall Protection inside Rear Toy Hauler Storage Area (38SBS, 38STS)
- Laminated Structurwood™ Flooring
- Interior Paneling with 3/4" Insulation
- Foam Insulated Floor Framing with 3-Ply Underbelly
- One-Piece Flush-Floor Engine Cover (38SBS, 38STS)
- Power Heated Remote Exterior Mirrors
- Fog Lights
- 30" Deep Bedroom Slide-Out Houses (N/A: 38SBS, 38STS)
- One-Piece Polyethylene Pass-Through Storage Compartment
- Side-Hinged Baggage Doors
- Painted Mask and Skirt with Vinyl Exterior Graphics
- Rear Ladder (N/A: 38SBS, 38STS)
- Undercoating

OPTIONS

- Chrome Power Heated Remote Exterior Mirrors
- 3M Film Front Mask

CHASSIS/ENGINE/SUSPENSION

- Freightliner Custom Chassis
- Cummins® ISB-02 5.9 Liter 300 HP at 2,700 RPM
- Allison® 2100 MH Automatic Transmission with Push Button Shift Pad
- Torque: 600 lbs./ft. Max. Net at 1,600 RPM
- 750 Watt/115 Volt Block Heater
- 80 Gallon Fuel Tank
- 160 Amp Alternator
- Rear Axle Ratio: 4.78:1
- Radial Tires: 255/70R x 22.5
- Stainless Steel Wheel Simulators
- Leaf Spring Suspension
- Four Gas Shock Absorbers
- Hydraulic Disc Brakes System
- Pre-Wire for Supplemental Braking System
- Fully Automatic Hydraulic Leveling System
- 5,000 Lb. Hitch Receiver with Dual Connector 4-Pin or 7-Pin

COCKPIT

- Fiberglass Automotive Dash with Vinyl Covering, Brushed Gray Instrument Panel
- CD Player/Radio with DVD Player, Sirius-Ready Compatibility, Weather Band, Remote and Six Speakers
- Multi-Positioned Sunvisors
- Rear Vision System Prep
- Wood Framed Cabinet Doors with Smoked Glass over Front Entertainment Center Systems (N/A: 38SDD)
- Secure Front Cab over Television with Steel Framing (N/A: 38SDD)
- Soft Touch Vinyl Pilot and Co-Pilot Recliner Seats (N/A: 38SBS, 38STS)
- Soft Touch Vinyl Pilot and Co-Pilot Recliner Seats with Integrated Seatbelts (38SBS, 38STS)
- Six-Way Power Pilot Seat
- Soft Touch Vinyl Cab Seats with Integrated Seatbelts, Seats Located behind Pilot and Co-Pilot Cockpit Seats, Flip-Down Wall-Mounted Cup Holders at Each Seat Location (38STS)
- Dash Workstation
- Six-Way Power Co-Pilot Seat
- Sirius Satellite Radio System with 6 Months' Pre-Paid Activation
- Single-Camera Rear Vision System with Audio and Adjustable Camera
- 3-Camera Rear Vision System with Audio and Adjustable Center Camera
- Power Sunvisors
- Pilot and Co-Pilot Side Window Pull-Down Sunshades
- Interior Solar Privacy Sunscreens
- Air Horns
- CB Radio Prep

OPTIONS

APPLIANCES AND ACCESSORIES

- Large Double-Door Refrigerator
- High-Output 3-Burner Cooktop without Oven
- Spacesaver Convection Microwave with Touch Control
- 24" Stereo Color TV with Remote Control in Cockpit Overhead (Option on 38SBD) (N/A: 38SDD)
- 32" LCD TV with Remote Control in Center of Coach (38SBD)
- 26" LCD TV on Partition Wall Facing Living Room Area (38SDD)
- 20" LCD TV on Partition Wall Facing Dining Room Area (38SDD)
- 20" Color TV with Remote Control in Bedroom (N/A: 38SBS, 38STS)
- DVD and Video Control Box with Booster and RF Modulator; Control Boxes Allow DVD Player to Play Video in Bedroom TV
- Digital Satellite System Prep
- Exterior Gas Line Hook-Up Prep for LP Accessories

OPTIONS

- Large Double-Door Refrigerator with Ice Maker
- Large Double-Door Refrigerator with Ice Maker 10 Cu. Ft.
- Large Four-Door Refrigerator with Ice Maker (N/A with Pantry)
- High-Output 3-Burner Range with Oven
- Washer/Dryer Prep (N/A: 38SBS, 38STS)
- Combination Washer/Dryer, Requires Prep Option (N/A: 38SBS, 38STS)
- Fireplace with Decorative Hardwood Frame (38SBD)
- 32" Flat Screen LCD TV in Front Cockpit Overhead IPO 24" TV (N/A: 38SBD, 38SDD)
- Central Vacuum System
- Home Theater Surround Sound System with Subwoofer Added to In-Dash Stereo with DVD Player
- Portable Air Compressor (38SBS, 38STS)
- Two Weatherproof Exterior Speakers with Amplifier and Remote (38SBS, 38STS)
- Exterior Entertainment Center, CD Player Radio with Two Speakers (N/A: 38SBS, 38STS)
- 20" LCD TV inside Garage Area (38SBS, 38STS)

SIMBA FRONT ENGINE DIESEL / TOY HAULER 07 FEATURES & OPTIONS

INTERIOR

- New Vintage Oak Cabinetry
- Square Raised Panel Hardwood Cabinet Doors Throughout
- Black ABS Refrigerator Insert Panels (N/A: 38SBS, 38STS)
- Satin Nickel Raised Refrigerator Insert Panels (38SBS, 38STS)
- Heavy-Duty Ball Bearing Drawer Guides
- Satin Nickel Cabinetry Hardware and Bath Accessories
- Solid Surface Radius Profile Kitchen Countertop with Stainless Steel Sink, Chrome Pullout Faucet and Two Sink Covers
- Pullout Countertop Extension with Two Drawers Built In (N/A: 38SBS, 38STS, 38SDD)
- Laminate Bathroom Countertop with Decorative Backsplash and Laminate Perm-Edge
- All Other Countertops Laminated with Wood Grain Rubber Edge Countertop Edge Treatments, Except Kitchen and Bath Lavatory
- Kitchen Pantry next to Refrigerator with Full Height Roll-Out Storage Cabinet (N/A with Four-Door Refrigerator Option)
- Laminate Tile Flooring Kitchen, Bath and Entryway
- Nylon Carpeting with Pad in Living Area and Bedroom

- Hutch with Backlighting Glass Door (37PCT)
- French Style Door into Bedroom (37PCT)
- Curbside Bedroom Slide-Out Wardrobe with TV Cabinet (37PCT)
- Blackout Day/Night Pleated Shades in Living Area and in Bedroom; Mini Blinds in Kitchen and Bathroom, Where Applicable
- Nickel Silver Mini Blinds over Sidewall Windows in Garage Area (38SBS, 38STS)
- Soil Repellent on Fabric, Teflon® Fabric Protection

OPTIONS

- Decors: Cliffside, Pomegranate, Honeycomb, Charcoal, Volcano (38SBS, 38STS only)
- Hardwood Raised Panel Doors on Refrigerator IPO Black ABS Refrigerator Insert (N/A: 38STS)
- Surged Carpet for Cargo Area (38SBS, 38STS)
- Cargo Privacy Screen (38SBS, 38STS)
- Utility Center — Folding Table with Shelves (38SBS, 38STS)
- Wood Choice: Newport Cherry, Champagne Select

FURNITURE

- Queen Bed with Nightstands (N/A: 38SBS, 38STS)
- Electro-Majic™ Bed, Mattress New Style Ladder and Sleepsac (38SBS, 38STS)
- Arched Back Wood Booth Dinette with Legless Dream Dinette Countertop and Storage Access Doors on End of Booth Dinette Seat Base (37PCT, 38SBS, 38SBD)
- Forward-Facing Seatbelts in Booth Dinette inside Living Area Slide-Out (N/A with Freestanding Dinette Option) (37PCT, 38SBS)
- Freestanding Dinette with Two Freestanding Chairs and Two Folding Chairs (38SDD)
- Roadside: Fabric Wall Hugger Sleeper Sofa, Two Pillows on All Sofas (N/A: 38SBS, 38STS)
- Curbside: 80" Vinyl with Fabric Trim Wall Hugger Sleeper Sofa, Two Pillows on All Sofas with Volcano Interior Selection (38STS)
- Curbside: 72" Vinyl with Fabric Trim Wall Hugger Sleeper Sofa, Two Pillows on All Sofas with Volcano Interior Selection (38SBS)
- Curbside: Fabric Swivel Glider Barrel Chair (37PCT, 38SBD)
- Curbside: Two Fabric Swivel Glider Barrel Chairs with Center Table (38SDD)
- Polyethylene Indoor/Outdoor Table (38STS)
- Roadside: Dresser below Bedroom Window (38SBD, 38SDD)
- Fabric Swivel Glider Barrel Chair with Desk and Desk Chair Bedroom (37PCT)

OPTIONS

- Curbside : New Style Soft Touch Vinyl Swivel Recliner IPO Fabric Swivel Glider Barrel Chair (37PCT, 38SBD)
- Curbside: OptimaLeather™ Euro-Recliner Chair with Heat, Massage and Ottoman IPO Barrel Chair (37PCT, 38SBD)
- Curbside: Two OptimaLeather™ Euro-Recliner Chairs with Heat, Massage and Ottoman, and Center Table IPO Barrel Chairs (38SDD)
- Roadside: Fabric Hide-A-Bed Sofa with Two Pillows (N/A: 38SBS, 38STS)
- Roadside: Fabric Hide-A-Bed Sofa with Air Mattress and Two Pillows (N/A: 38SBS, 38STS)
- Rear Storage Area: Happijac Bed with Sofa Mechanism; Bed Can Be Set Up as Sofa or Bed (N/A with Bunk Bed or Bench Seat Option) (38SBS, 38STS)
- Roadside: Rear Storage Area Fold-Up Bunk Beds (N/A with Happijac Option) (38SBS, 38STS)
- Fabric Swivel Glider Barrel Chair with Center Lift-Up Table IPO Desk and Desk Chair in Bedroom (37PCT)
- Second Polyethylene Indoor/Outdoor Table (38SBS, 38STS)
- Freestanding Dinette with Two Freestanding Chairs and Two Folding Chairs (N/A: 38SBS, 38STS, 38SDD)

ELECTRICAL SYSTEMS AND LIGHTS

- 50 Amp 120V Distribution Panel and Cord
- 60 Amp Electronic 12V Power Converter
- Onan® 5.5 kW Diesel Generator
- Two 6V House Batteries
- Two 12V Heavy-Duty Chassis Batteries
- Battery Disconnect Switches
- Water Pump Switch in Service Bay Area and Convenience Center
- Hallway Convenience Center
- Fluorescent Ceiling Lights Throughout
- Decorative Satin Nickel Wall Lighting Throughout
- Four Docking Lights 12V: Exterior 2 Sidewall and 2 Rear of Coach (38STS)

OPTIONS

- 50 Amp Energy Management System
- 2,000 Watt Inverter with Two Additional Batteries, 4 Total 6 Volt Batteries
- Pump Station with 30 Gallon Tank, Timer Switch and Fuel Gauges on Hallway System Panel, Emergency Pump Station Shut-Off Switch (38SBS, 38STS)
- Storage Compartment Tank Monitor Gauge

SIMBA FRONT ENGINE DIESEL / TOY HAULER 07 FEATURES & OPTIONS

PLUMBING AND LP SYSTEMS

- Kitchen Stainless Steel Sink with Single-Lever Brushed Chrome Pullout Faucet
- Separate Brushed Chrome Faucet for Filtered Water
- Satin Nickel Bath Lavatory Faucet
- Demand Water System and Water Pump
- 10 Gallon LP Gas/Electric Water Heater with Electronic Ignition, DSI
- Winterization Valving System
- Water Heater Bypass Valving
- No-Fuss Flush Holding Tank Rinsing System
- Insulated Systems Compartment with Easy Access to Hook-Up
- Gravity and Pressurized Water Fill (N/A: 38SBS, 38STS)
- Contained Storage Area for Sewer Hose
- Spray-Away Sprayer with Hose (38SBS, 38STS)
- One-Piece Fiberglass Shower
- Satin Nickel Shower Door with Obscure Glass (38SBS, 38STS)
- Rounded Satin Nickel Shower Door Frame with Decorative Glass (N/A: 38SBS, 38STS)

OPTIONS

- RV Sani-Con 2 System, Holding Tank Flush System (N/A: 38SBD)
- Bathtub IPO Shower; Rounded Shower Stalls Will Be Neo-Angled with Tub Option

HEATING, VENTS AND AIR CONDITIONING

- Dual 13.5M BTU Air Conditioners with Ducted Air and Digital Wall-Mounted Thermostat (N/A: 38SBS, 38STS)
- One 15M BTU Air Conditioner with Ducted Air and Digital Wall-Mounted Thermostat (38SBS, 38STS)
- Electronic Ignition Furnace
- Electronic Dash AC/Heat Climate Control System
- In-Floor Ducted Heating System with Metal Floor Registers
- Kitchen Powered Attic Fan with Wall Control of Automatic Dome and Fan Power
- Bath Powered Attic Fan with Wall Control of Automatic Dome and Fan Power
- Attic Fan with Rain Sensor with Electronic Wall Thermostat, Fan Located above Electro-Majic™ Bed (38SBS, 38STS)
- Attic Fan with Wall Control of Automatic Dome and Fan Power Garage Area (38SBS, 38STS)
- 12V Heater in Wet Bay, Heat Pad on Fresh Tank

OPTIONS

- Dual 13.5M BTU Air Conditioners with Heat Pumps and Digital Thermostat Control (N/A: 38SBS, 38STS)
- One 13.5M BTU Air Conditioner with Heat Pump with Ducted Air and Analog Thermostat Control, Garage Area (38SBS, 38STS)
- Fantastic 12V Attic Fan with Rain Sensor with Electronic Wall Thermostat in Kitchen
- Fantastic 12V Attic Fan with Rain Sensor with Electronic Wall Thermostat in Bath
- Fantastic 12V Attic Fan with Rain Sensor with Electronic Wall Thermostat in Garage Area (38SBS, 38STS)

WINDOWS, DOORS AND AWNINGS

- Dual Pane Sliding Flush-Mounted Windows
- Opera Window at Swivel Glider Barrel Chair Location (N/A: 38SBS, 38STS, 38SDD)
- Radius Entrance Door with Clear Glass, Roller Shade, Screen Door and Anti-Skid Steps
- Rear Wall Bedroom Window (N/A: 38SBS, 38STS)
- Topper Slide-Out Awnings Living Area and Bedroom
- Awning Rail
- Protecta Glaze Tinted Plexiglas® Skylight in Bathroom

OPTIONS

- Poly-Weave Patio Awning
- Eclipse Poly-Weave Automatic Patio Awning
- Poly-Weave Window Awnings Living Area Slide-Out House Windows (N/A: 38SBS, 38STS)
- Poly-Weave Bedroom Window Awning (N/A: 38SBS, 38STS)
- Second Entry Door into Garage Area (38SBS, 38STS)
- Bedroom Skylight 30" x 30" Decorative Wood Framed with Shade (37PCT)

SIMBA FRONT ENGINE DIESEL / TOY HAULER 07 WEIGHTS & MEASUREMENTS

	37PCT	38SBD	38SDD	38SBS	38STS
Weights * (Lbs.)				TOY HAULER	TOY HAULER
Gross Vehicle Weight Rating	26,000	26,000	26,000	26,000	26,000
Gross Combined Weight Rating	30,000	30,000	30,000	30,000	30,000
Front Gross Axle Weight Rating	10,000	10,000	10,000	10,000	10,000
Rear Gross Axle Weight Rating	17,500	17,500	17,500	17,500	17,500
Measurements					
Wheelbase	242"	260"	260"	260"	260"
Overall Length	38' 4"	39' 4"	39' 4"	39' 3"	39' 3"
Overall Height with A/C	12' 8"	12' 8"	12' 8"	12' 8"	12' 8"
Interior Height	84"	84"	84"	84"	84"
Interior Width	94.5"	94.5"	94.5"	94.5"	94.5"
Exterior Width	100.5"	100.5"	100.5"	100.5"	100.5"
Tank Capacities ** (Gal.)					
Water Heater	10	10	10	10	10
Gray Tank	45	45	45	45	45
Black Tank	54	54	54	54	54
Fresh Tank	60	60	60	60	60
LP Tank ***	20	20	20	20	20
Fuel Tank	80	80	80	80	80

* Towing capacity is limited by GCWR; your vehicle's towing capacity is the difference between the GCWR and the actual vehicle weight, including all water, fuel, passengers and cargo. Your towed vehicle should be equipped with auxiliary brakes if the weight of the towed vehicle exceeds 1,000 lbs. Consult your owner's manual for further towing information.

** All tank capacities are estimated based upon calculations provided by the tank manufacturers and represent approximate capacities. The actual "usable capacity" may be greater or less than the estimated capacities based upon fabrication and installation of the tanks.

*** Actual filled LP capacity is 80% of listing due to safety shut-off required on tank.

The actual overall length of the recreational vehicle may differ from that indicated in the brochure due to variances in the manufacturing process and/or installed components. The actual length may be greater or less than that indicated. Due to the large variety of options and floorplan arrangements available to our customers, actual weights for each unit can differ significantly. Safari provides a weight sticker on each unit we produce which includes that unit's tank capacities and approximate weight. Consult your local Safari dealer for unit availability and further information. The information printed in this brochure reflects product design, fabrication, and component parts at the date of printing. The manufacturer reserves the right, at any time, to make changes in product design or material or component specifications as its sole option, without notice. This includes the substitution of components of a different brand or trade name which will result in comparable performance. All information printed in this brochure is subject to change after the date of printing. Some features shown or mentioned in this brochure are optional and may only be available in selected floorplans. Photographs may show props or decorations that are not standard equipment on Safari models. Safari, the Safari logo and its design, are registered trademarks. All other products and company names are trademarks and/or registered trademarks of their respective holders. While the color of the motorhome's exterior and the interior fabrics depicted in this sales brochure are fair and reasonable depictions, the colors depicted may not be an exact match of the actual colors because of the variances in photo-processing and variances caused by inserting the photographs within the sales brochure. Due to product improvements, changes during the model year and/or transcription errors that may occur, information represented within this brochure may not be accurate at the time of your purchase. If certain information is significant to your purchasing decision, please confirm the information with your dealer prior to submitting your order. Component part and appliance manufacturers issue limited warranties covering those portions of the recreational vehicle not covered by the Limited Warranties issued by Monaco Coach Corporation. To learn which specific component parts and appliances are excluded from the Limited Warranties issued by Monaco Coach Corporation, please contact your selling dealership or Monaco Coach Corporation directly, or review the warranty packet inside the recreational vehicle.

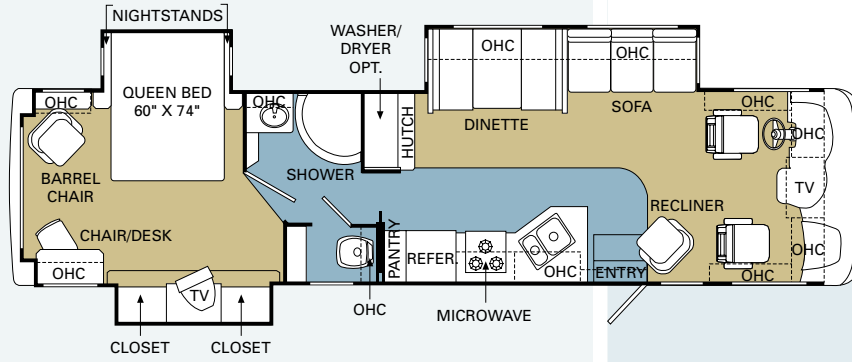
SIMBA FRONT ENGINE DIESEL & TOYHAULER

07 FLOORPLANS

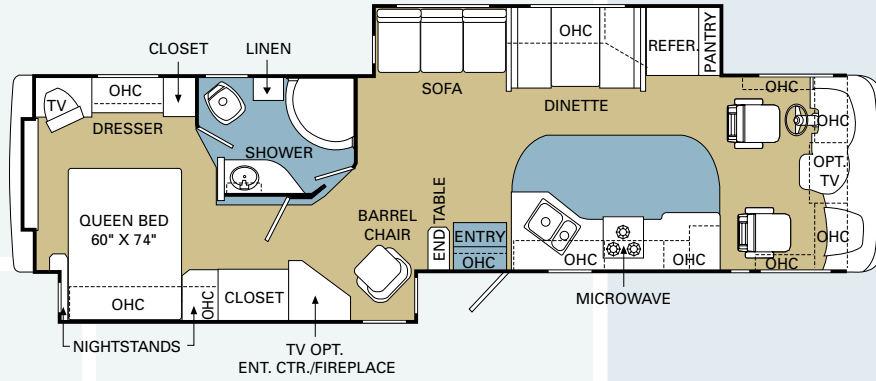
TILE 

CARPET 

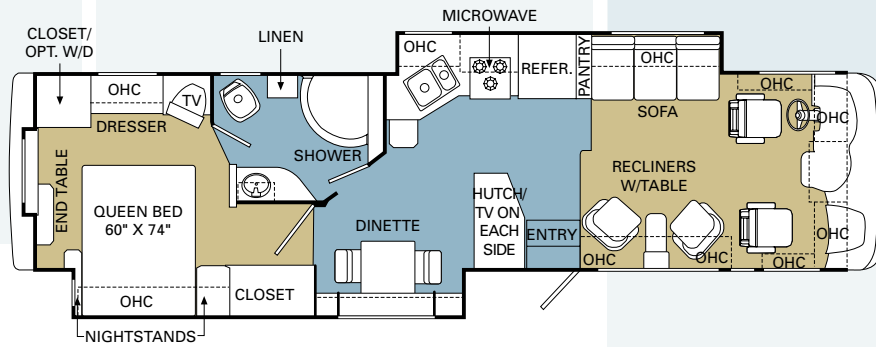
37PCT



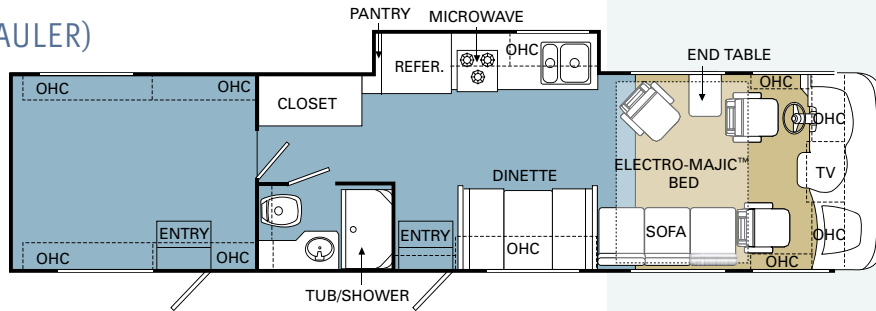
38SBD



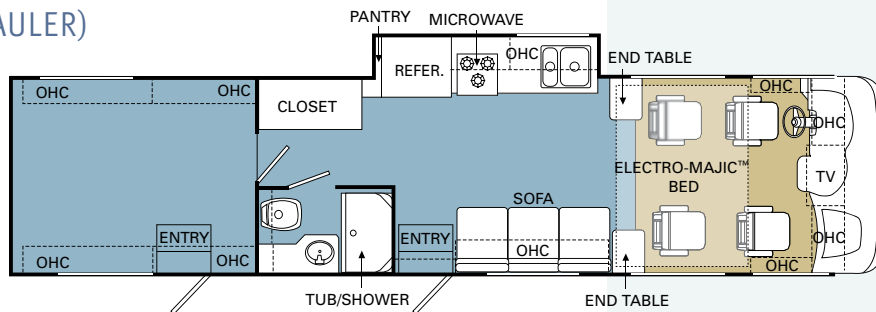
38SDD



38SBS (TOY HAULER)



38STS (TOY HAULER)



WE'RE HERE.
ANYTIME, EVERY TIME.

- Reach us anytime — literally — via our live customer support line.
- Drive in to one of our 350 Service Centers.
- Enjoy the first year free when you enroll in our Owner Advantage Roadside Assistance Program.
- See where it all begins with a tour of one of our facilities in Indiana or Oregon. Call 1-800-650-7337 or 1-800-634-0855 to find out more.



ASSISTANCE
SALES • TECH • ROADSIDE



www.safarimotorcoaches.com

91320 Coburg Industrial Way, Coburg, OR 97408

1.800.458.8735

WARRANTIES

12 month/24,000 mile basic limited warranty

3 Year/50,000 mile chassis warranty

5 year/50,000 mile limited warranty on aluminum or steel frame structure of sidewall, roof, front and rear cap

Applies to certain models. See owner's manual for complete details.