



Maverick® 2009 CLASS C MOTORHOMES BY GEORGIE BOY®



Maverick
For families. For life.



Maverick

For families. For life.

Maverick by Georgie Boy is designed to move families to new and exciting places with comfort and style. Travel freely surrounded with ample storage, entertainment features and a well equipped kitchen.

The entire family will appreciate features like the available 20" LCD television mounted on a swing arm for easy viewing from any seat in the house. The generous overhead bunk is also kid friendly with an optional child bunk safety rail and bunk ladder (not shown). (260 SO shown in Lakeside Maple with Manhattan Plum décor)

Maverick 2009 CLASS C MOTORHOMES BY GEORGIE BOY





Maverick's well appointed kitchen has everything needed for a busy family on the go, including a residential pull-out faucet, hardwood edge countertops, microwave oven, 3-burner range with oven, and a double door refrigerator.



The optional overhead entertainment center is loaded with state-of-the-art electronics that include a large 26" LCD television, DVD player and Bose® Wave® Radio sound system. And there is still room available for a full size adult to sleep in the overhead cabin with a pull out bunk.



Automotive styling surrounds you with conveniences like a molded plastic headliner, power windows and locks, cruise control, power steering, multiple drink holders, dual air bags, dash stereo with CD player and plush two-tone pilot seats.



Just for your convenience, a standard ceiling skylight lets in more natural light for a brighter interior.

Decor selections are subject to change throughout the model year. Please visit your Georgie Boy dealer or www.georgieboy.com for current decor availability.

DECOR SELECTIONS

A. Main
B. Accent

Manchester Mocha



Manhattan Plum



Saffron Geo



Alumina Grey





Maverick

For families. For life.

The Maverick 290 QB features a spacious dinette and comfort lounge sofa with plenty of room for family and friends.

A thoughtfully designed bath and vanity area provides a neo-angle shower with glass enclosure. (Most models)



At the end of an eventful day, relax and settle into this sumptuous bedroom featuring a residential size queen bed, designer window treatments and Lakeside Maple hardwood cabinetry.



Huge storage is a hallmark of the Maverick with 4 floorplans boasting 100+ cubic feet of storage. Molded storage bays feature an integrated table that is perfect for the family picnic or tailgate.

OUTSTANDING CAPACITY

Fresh Water Capacity

Maverick 56 Gallons	Other Brands 41 Gallons
------------------------	----------------------------

Maverick offers a class leading 56 gallon fresh water system. This is up to 37% more capacity than other brands.

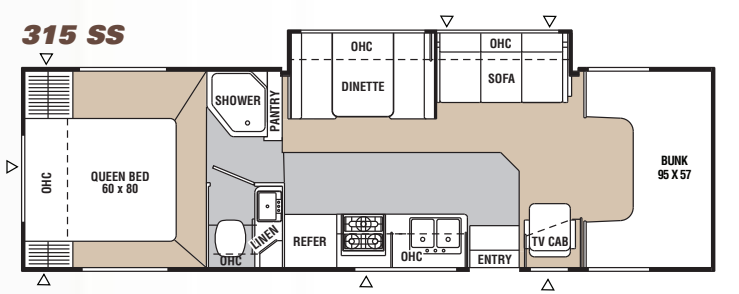
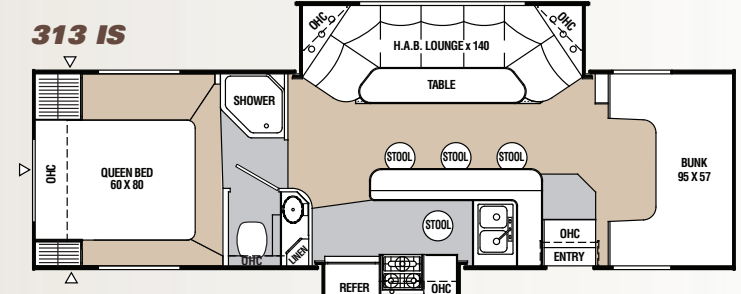
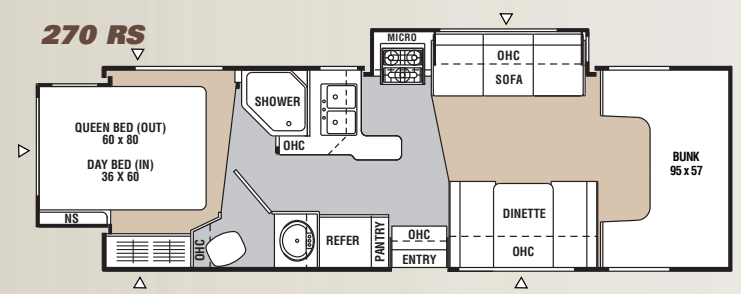
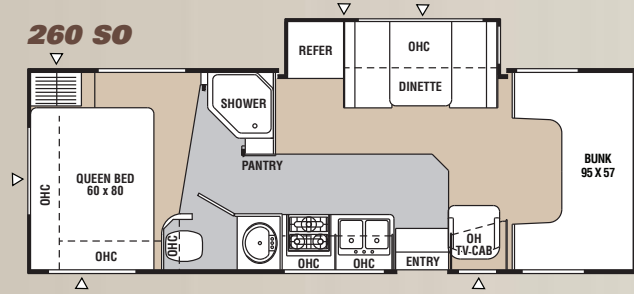


The coach command center provides a single panel for commonly used gauges and switches. (Monitor panel, generator start, sliderunner switch and water heater ignition)



2009 MAVERICK FLOORPLANS

SLIDE FLOORPLANS



LEGEND: Carpet
 Linoleum
 Storage

POPULAR FEATURES AND OPTIONS

LIVING APPOINTMENTS	
Lakeside Maple cabinetry	S
Hardwood cabinet doors and drawers	S
Full extension ball bearing drawer guides	S
Techwood drawer sides	S
Linoleum flooring	S
Partial carpet (slide models)	S
Designer window treatments and shades	S
Hide-a-bed sofa (313 IS, 315 SS)	S
Booth dinette (n/a 313 IS, 213 QB, 223 RK)	S
U-shaped booth dinette (213 QB, 223 RK)	S
Bar stools (313 IS)	S
Comfort lounge sofa (223 RK, 270 RS, 290 QB)	S
Lounge chair (260 SO, 315 SS)	S
Wood edge countertops	S
SLEEPING APPOINTMENTS	
Residential 60" x 80" queen bed (n/a 223 RK, 270 RS)	S
Bunk beds (290 QB, 315 SS)	O
Convertible day bed/queen bed (270 RS)	S
Cabover queen bed	S
Privacy drape - cabover bed	S
Privacy drape - cockpit area	S

COCKPIT APPOINTMENTS	
Cruise control	S
Tilt steering wheel	S
Dash air conditioning	S
Dash stereo with CD player (Chevy models)	S
Dash stereo with CD player, weatherband and satellite radio capable (Ford models)	S
Power windows and locks	S
Reclining captains chairs	S
Upgraded exterior mirrors	S
APPLIANCES AND ACCESSORIES	
Cabover entertainment center: 26" LCD TV, DVD player and Bose® Wave® radio (n/a 213 QB, 223 QB, 290 QB)	O
Side mounted 20" LCD TV and DVD player	O
iPod® docking station (Ford models)	O
Sirius® radio docking station (Ford models)	O
TV antenna	S
Microwave	S
3-burner range with oven (n/a 313 IS)	S
Euro style range with cover (313 IS)	S
Stainless steel kitchen sink (n/a 313 IS)	S
Euro style sink with cover (313 IS)	S
Double door refrigerator	S

HEATING AND AIR CONDITIONING	
20,000 BTU furnace (non-slide models)	S
30,000 BTU furnace (slide models)	S
13,500 BTU ducted roof air conditioner (slide models)	S
13,500 BTU non-ducted roof air conditioner (non-slide models)	S
Wall-mounted thermostat	S
Power bath vent	S
ELECTRICAL AND LIGHTING	
30 amp power cord	S
55 amp electronic converter	S
Auxiliary coach battery	S
Dual auxiliary battery upgrade (n/a with diesel option)	O
Coach battery disconnect	S
GFI circuit	S
Outside 120-volt receptacle	S
Cable TV jacks	S
Patio light (n/a on models shipped to Canada)	S
3.6 KW Onan® gas generator	O
3.6 KW Onan® LP generator	O
Coach command center	S

PLUMBING AND LP SYSTEM	
6-gallon gas/electric E.I. water heater (slide models)	S
6-gallon gas E.I. water heater (non-slide models)	S
Water Works™ utility panel	S
Demand water pump	S
Skylight over shower	S
Glass shower enclosure (slide models, 290 QB)	S
Shower curtain (213 QB, 223 RK)	S
One-piece ABS tub surround	S
Outside shower (slide models)	S
Heated, enclosed holding tanks	S
EXTERIOR AND CONSTRUCTION	
6.0L diesel engine - Ford (n/a 213 QB, 223 RK, 313 IS)	O
5,000 lb. towing hitch (Ford models)	S
3,000 lb. towing hitch (Chevy models)	S
Painted skirt (slide models)	S
Driver and passenger air bags	S
Metal wheel covers (slide models)	O
Stainless steel wheel inserts	O
Radial tires	S
Spare tire kit (313 IS)	S
Air assist suspension	O
Laminated floor	S

Laminated sidewalls	S
Laminated crowned roof	S
Seamless TPO roof covering	S
Roof ladder	S
Aluminum running boards	S
Power entrance step	O
80" tall entrance door	S
Patio awning	S
Sliderunner awnings	S
Front cabover window (n/a with optional cabover entertainment center)	S
CSA Upfit (mandatory for all Canadian provinces)	S
SAFETY AND SECURITY	
LP leak alarm	S
Fire extinguisher	S
Smoke detector	S
Carbon monoxide detector	S
Emergency start switch	S
Driver and passenger air bags	S
Exterior security light (slide models) (n/a on models shipped to Canada)	S
Entrance door dead bolt lock	S
Safety glass windows (non-slide models)	S
Tinted safety glass windows (slide models)	S
Roof ladder and child restraint system	O
Owner's information package	S

2009 MAVERICK SPECIFICATIONS

	NON-SLIDE MODELS				SUPER SLIDE MODELS						
	213 QB	223 RK	290 QB	290 QB	260 SO	260 SO	270 RS	270 RS	313 IS	315 SS	315 SS
Chassis	Chevy	Chevy	Chevy	Ford	Chevy	Ford	Chevy	Ford	Ford	Ford	Chevy
Chassis Model	C-3500	C-3500	C-3500	E-45	C-3500	E-45	C-3500	E-45	E-45	E-45	C-3500
Engine Size (Liter)	6.0	6.0	6.0	6.8	6.0	6.8	6.0	6.8	6.8	6.8	6.0
Wheel Base	159"	177"	191"	190"	177"	176"	191"	190"	208"	208"	209"
Rear Axle Ratio	4.1	4.1	4.1	4.56	4.1	4.56	4.1	4.56	4.56	4.56	4.1
GVWR (lbs.)	12,300	12,300	12,300	14,500	14,050	14,500	14,050	14,500	14,500	14,500	14,050
CW (lbs.)	8,998	9,038	10,212	10,679	10,733	11,061	11,067	11,395	12,221	11,952	11,899
GCWR (lbs.)	16,000	16,000	16,000	20,000	17,600	20,000	17,600	20,000	20,000	20,000	17,600
Interior Height	6'10-1/2"	6'10-1/2"	6'10-1/2"	6'10-1/2"	6'10-1/2"	6'10-1/2"	6'10-1/2"	6'10-1/2"	6'10-1/2"	6'10-1/2"	6'10-1/2"
Exterior Height*	112"	112"	112"	112"	112"	112"	112"	112"	112"	112"	112"
Exterior Length	23'8"	24'6"	30'4"	29'10"	28'2"	27'8"	28'6"	28'	31'11"	31'11"	32'5"
Exterior Width	8'4"	8'4"	8'4"	8'4"	8'4"	8'4"	8'4"	8'4"	8'4"	8'4"	8'4"
Sleeping Capacity	5	4	6	6	5	5	6	6	5	6	6
Exterior Storage Capacity (cu. ft.)	102	38	55	55	112	112	57	57	104	113	113
Fuel Capacity (gal.)	35	35	35	55	57	55	57	55	55	55	55
Fresh Water Capacity (gal.)	50	50	50	50	50	50	50	50	43	50	50
Waste Water Capacity (gal.)	37	28	27	27	29	29	29	29	28	28	28
Grey Water Capacity (gal.)	22	28	27	27	29	29	29	29	27	27	27
Water Heater Capacity (gal.)	6	6	6	6	6	6	6	6	6	6	6
Tire Size	LT225/75R16D	LT225/75R16D	LT225/75R16D	LT225/75R16E	LT225/75R16D	LT225/75R16E	LT225/75R16E	LT225/75R16E	LT225/75R16E	LT225/75R16E	LT225/75R16E
LP Gas Capacity (lbs.)	40	40	40	40	68	68	68	68	68	68	68

*Includes Roof A/C †Estimated
 GVWR (Gross Vehicle Weight Rating): The maximum permissible weight of the unit, including the UUV plus all fluids, cargo, optional equipment and accessories. For safety and product performance, do not exceed the GVWR.
 CW (Curb Weight): The weight of the unit without factory or dealer installed options, plus allowance for the weight of full fuel capacity. The "payload capacity" for all other fluids, cargo, occupants, optional equipment and accessories can be determined by subtracting the CW from the GVWR.
 GCWR (Gross Combined Weight Rating): The maximum total weight of the loaded unit, plus a tow vehicle. This includes the weight of both the unit and tow vehicle, fuel for each, all other fluids, cargo, occupants, optional equipment and accessories.
 Wider Widths: Numerous George Boy floorplans feature the "wide body" design concept, which gives you significantly enhanced interior living space and innovative floorplans. In making your purchase decision, you should be aware that a few states restrict access on some or all roads within the state to vehicles with a maximum 96" width, although special road usage permits may be available. Vehicles up to 102" in width are permitted in the vast majority of states. You should confirm the road usage laws in the states of interest to you before making your purchase decision.

Maverick 2009 CLASS C MOTORHOMES BY GEORGIE BOY

Maverick

For families. For life.



You've decided to travel. Freedom has never meant more to you. You've planned for this day, and now it's here.

At George Boy, we've been in the recreational vehicle business since 1968. Our goal is to design and build motorhomes that can keep up with the explorer in you. This means working hard to ensure that every detail of your new George Boy is right – before you turn the key.

Of course, our commitment to quality also means a few late-night trips to the coffee maker.

Your George Boy® Dealer



George Boy is a division of Coachmen RV Company, LLC

P.O. Box 30 ♦ Middlebury, IN 46540

Phone: 800.353.7383

www.georgieboy.com

All information contained in this brochure is believed to be accurate at the time of publication. However, during the model year, it may be necessary to make revisions and George Boy reserves the right to make all such changes without notice, including changes in prices, colors, materials, equipment and specifications, as well as the addition of new models and the discontinuance of models shown in this brochure. Therefore, please consult with your George Boy dealer and confirm the existence of any materials, design or specifications that are material to your purchase decision. 6/08