

EPIC™ CLASS A MOTORHOMES BY COACHMEN

# EPIC™

2006



Leader to the Great Outdoors®

# EPIC™

SEE THE WORLD FROM A DIFFERENT VIEW

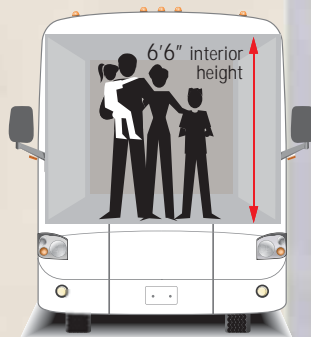


*The spacious cabin of the Epic nicely displays the many amenities this upscale motorhome offers. Relax on the plush sofa or available ultra leather Euro chair, while watching your favorite shows on the 27" flatscreen TV. (Shown in Elegant Cabernet décor.)*

EPIC



COMPETITION



## LUXURY WITH EPIC PROPORTIONS

*7'1" Ceiling Height – Heads Above The Rest!*

The newest addition to our Class A Gasoline lineup is one of Epic proportions. The Epic's 7'1" tall cabin gives you the freedom to stretch out and relax.

As you can see in this diagram, the Epic ceiling is heads above the rest. Tall guests won't have to stoop for light fixtures and others will simply appreciate the added spaciousness of the Epic.

## DÉCOR SELECTIONS

Fabric Key: A. Main B. Accent C. Bedspread



*This optional AM/FM stereo complete with cassette, CD player and built-in weather band was specifically designed for use in RV's. The large, easy-to-use buttons and knobs let you keep your eyes on the road rather than on the radio.*

*The optional driver's door with electric window allows you to climb right in to the driver's seat and take command. An ergonomically designed front dash puts all of the controls at your fingertips.*





# EPIC™ LUXURIOUS LIVING

Once you reach your destination, the Epic provides you with abundant living space which is adorned with high-end details. Beautiful crown molding, designer valences and hardwood cabinet doors add class and elegance to your coach.

*The optional freestanding dinette table is paired with gorgeous upholstered high-backed chairs that provide a comfortable seat while you eat, play games, write letters or simply gaze out the arched cathedral window.*

*The large coach slide-out in the 3480 DS, shown below in Estate Gold décor, makes for a grand living area. Amenities like the designer sculpted carpet, upscale lighting package and optional black ultra leather furniture provide luxurious appeal.*

*This "hidden" pantry found conveniently next to the dinette of the 3180 DS provides even more storage space for your kitchen and house wares.*





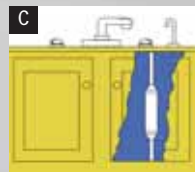
The 3480 DS kitchen, shown above, has exceptional storage space. The hardwood cabinet doors, elegant details and functional design enhance this beautiful kitchen.

A. The Epic's kitchen is loaded with convenient amenities like the under sink utensil drawer (most models), designer faucet with pull-out sprayer, and separate drinking water faucet.

B. The cockpit overhead convenience compartment with cargo net gives you a secure place to put your frequently used items, without worry of them falling out when you open the door.

C. The water purifier significantly reduces the number of bacteria in the water, which results in safer, cleaner and better tasting water.

D. The Epic's standard innerspring Boston booth dinette is not only beautiful and comfortable, it is also safe. Coachmen places seat belts at every fixed seating location.



# EPIC™

## JUST LIKE HOME

Whether you're packing for a long weekend or a month long trip, you'll find a surprising amount of wardrobe and drawer storage. There's even room for an optional 20" flatscreen TV, and a vanity area with mirrors that open to a window.

*Keep your clothes clean and fresh with the optional washer/dryer combination. (Available on the 3580 TS)*



The functional bath area features a foot pedal porcelain toilet, large mirrored vanity/medicine cabinet, Corian edge lav countertop and an upgraded faucet.





*The integrated seat and wall-mounted soap/shampoo/bodywash dispenser add convenience to the Epic's one-piece ABS shower surround. A standard glass enclosure also adds residential appeal.*



Enjoy the luxurious surroundings and convenient features in the spacious Epic slideout bedroom suite. The Epic bedroom's well-appointed décor features romantic window treatments, a luxurious bedspread with pillow shams, a designer lighting package, and a residential headboard.



## EPIC™ STANDARD FEATURES

### INTERIOR APPOINTMENTS

- ◆ Easy-Clean Vinyl Soft-Touch Ceiling
- ◆ Terrace Birch Cabinetry
- ◆ Solid Surface Countertop Edge
- ◆ Hardwood Raised Panel Cabinet Doors & Solid Wood Drawer Fronts
- ◆ Techwood Drawers w/Residential Guides
- ◆ Day/Night Shades – Coach
- ◆ Night Shades – Bedroom
- ◆ Wrap Around Privacy Drape – Cab
- ◆ Safety Glass Windows
- ◆ Hide-A-Bed Sofa
- ◆ Euro Chair w/Ottoman (3180 DS)
- ◆ Lounge Chair (N/A 3180 DS)
- ◆ Innerspring Boston Booth Dinette
- ◆ 6-Panel Passage Doors
- ◆ TV Cabinet In Bedroom
- ◆ Hallway Skylight
- ◆ Kitchen Skylight (3580 TS)

### INTERIOR EQUIPMENT

- ◆ 27" Flatscreen TV-Coach
- ◆ In-dash AM/FM CD Player
- ◆ TV Antenna
- ◆ Prewired For Backup Camera
- ◆ Cable TV Jack(s)
- ◆ LP Leak Alarm
- ◆ Smoke Detector
- ◆ Carbon Monoxide Detector
- ◆ Fire Extinguisher
- ◆ Phone Jack
- ◆ Prewire for Satellite Dish

### GALLEY

- ◆ Microwave Oven
- ◆ 3-Burner Range w/21" Oven
- ◆ Range Cover
- ◆ Double Door Refrigerator
- ◆ Dedicated Drinking Faucet w/Purifier
- ◆ Kitchen Faucet w/Integrated Pull Out Sprayer
- ◆ Silverware Drawer
- ◆ Sink Covers (2)

### BATH AND WATER

- ◆ Double Pedal China Toilet
- ◆ One-Piece ABS Tub Surround
- ◆ Rainfall Glass Shower Door
- ◆ Power Bath Vent
- ◆ 6-Gallon Gas/Electric E.I. Water Heater (3180 DS, 3480 DS)
- ◆ 10-Gallon Gas/Electric E.I. Water Heater (3580 TS)
- ◆ Demand Water Pump

- ◆ Washer/Dryer Ready (3580 TS)
- ◆ Skylight Over the Shower
- ◆ Flip Down Shower Seat
- ◆ Wall Mounted Shower Soap Dispenser

### SLEEPING

- ◆ Queen Bed
- ◆ Deluxe Innerspring Mattress
- ◆ Hardwood Style Headboard
- ◆ Designer Bedspread

### ELECTRICAL/HEATING/AC

- ◆ Fluorescent Ceiling Lights Throughout
- ◆ 50 Amp Detachable Power Cord
- ◆ 55 Amp, 110/12-Volt Power Converter
- ◆ GFI Circuit
- ◆ Outside Recept (DS)
- ◆ Generator Ready w/Mount Kit
- ◆ Emergency Start Switch
- ◆ Auxiliary Battery
- ◆ Lighted Exterior Storage Boxes
- ◆ 35,000 BTU E.I. Furnace
- ◆ Prewire for Rear Roof A/C
- ◆ Low Profile 13,500 BTU Ducted Roof Air Conditioner
- ◆ Central Coach Command Center
- ◆ Entry Step Switch Panel
- ◆ Coach Battery Disconnect

### AUTOMOTIVE/EXTERIOR

- ◆ Tilt Steering Wheel
- ◆ Defrost Dash Fans
- ◆ Cruise Control
- ◆ Dash Air Conditioning
- ◆ Manual Hydraulic Leveling Jacks
- ◆ 22.5" Radial Tires w/Aluminum Rims
- ◆ Front and Rear Mud Flaps
- ◆ Power Entrance Step
- ◆ TPO Roof Material
- ◆ Crowned, Laminated Roof
- ◆ Laminated Floor & Laminated 2" Sidewalls
- ◆ Full-Basement Floor Design
- ◆ Bus Style Compartment Doors
- ◆ Fiberglass Front and Rear Caps
- ◆ Pass Through Rotocast Trunk Boxes
- ◆ 80" Tall Radius Entrance Door
- ◆ Patio Awning
- ◆ 5,000 lb. Towing Hitch
- ◆ Automotive Undercoating
- ◆ Air Assist Suspension
- ◆ Flush Floor Electric Slideouts – Coach
- ◆ Lighted Exterior Grab Handle
- ◆ Curb Side Security Light

## OPTIONAL FEATURES

### PREMIER PACKAGE:

- VCR /DVD Combo
- Stereo w/CD, Cassette and Built In Weather Band
- Rear Vision Camera
- Rear 11,000 BTU Ducted Roof A/C
- 5.5 KW Gas Generator (Marquis Gold)
- Drivers Door w/Electric Window
- Roof Ladder
- Exterior Swing-out Mirrors w/Remote & Heat
- Owners Information Packet
- Front End Paint Protection
- Convenience Package (Includes Fantastic Fan, Rechargeable Vacuum, Rechargeable Flashlight and Paper Towel Holder)

### ADDITIONAL OPTIONS:

- Residential Dinette w/Four Chairs and Arched Cathedral Window
- Ultra Leather Furniture (Sofa, Lounge Chair & Pilot Seats)
- Children 1st™ Child Safety Dinette
- King Bed (3580 TS)
- Satellite TV System
- Exterior Entertainment Center w/CD Player
- Euro Chair w/Ottoman (Std. on 3180 DS)
- 20" Flatscreen TV – Bedroom
- Two-Way Radio Package (4 units)
- Large Double Door Refrigerator
- Cooktop w/ Pots and Pans Drawer
- Convection Microwave Oven
- Washer/Dryer (3580 TS)
- 10 Gallon Gas/Electric E.I. Water Heater (Std. on 3580 TS)
- Manual Pilot Seats w/3-Point Seat Belts
- 15,000 BTU Ducted Roof Air Upgrade
- Slideout Storage Tray
- Power Patio Awning
- Slide-Out Room Awning - Bedroom
- Slide-Out Room Awning - Coach
- CSA Upfit
- Front End Paint Protection

## PAINT OPTIONS

Cabernet Metallic



Bay Gold



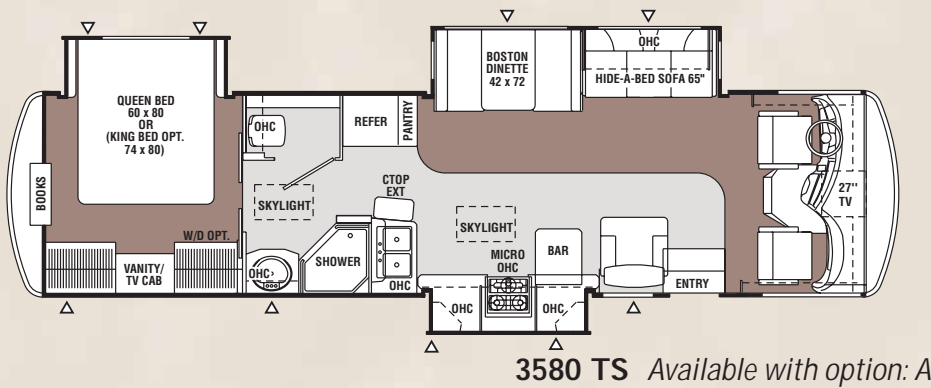
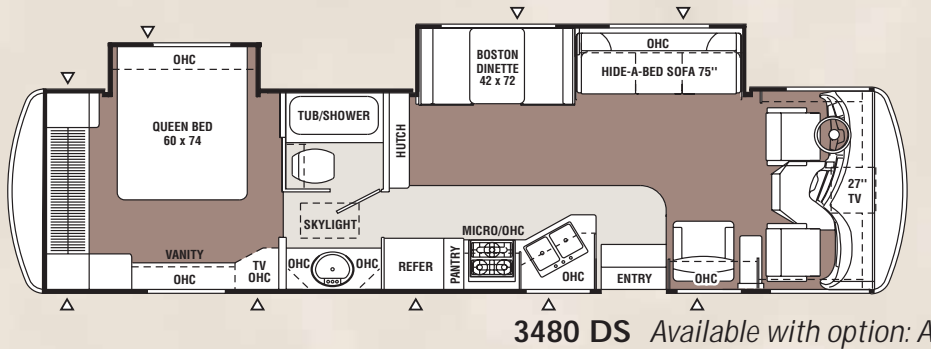
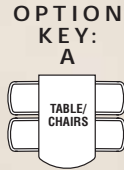
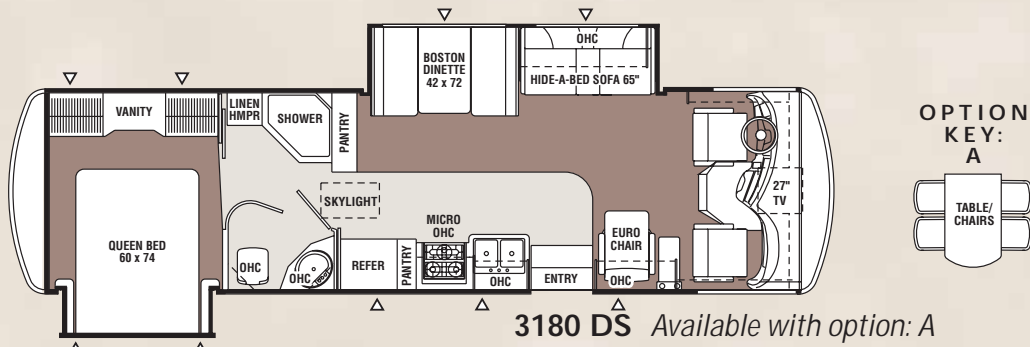
Chablis Metallic





# FLOORPLANS

# EPIC™



| EPIC CLASS A                     | 3180 DS            | 3480 DS            | 3580 TS            |
|----------------------------------|--------------------|--------------------|--------------------|
| Chassis                          | FORD / Workhorse   | FORD / Workhorse   | FORD / Workhorse   |
| Chassis Model                    | F-53 / W22         | F-53 / W22         | F-53 / W22         |
| Engine Size                      | V10-6.8L / V8-8.1L | V10-6.8L / V8-8.1L | V10-6.8L / V8-8.1L |
| Horsepower                       | 355 / 340          | 355 / 340          | 355 / 340          |
| Wheel Base                       | 208"               | 228"               | 228"               |
| Rear Axle Ratio                  | 5.38 / 4.78        | 5.38 / 4.78        | 5.38 / 4.78        |
| Tire Size                        | 235 / 80R22.5G     | 235 / 80R22.5G     | 235 / 80R22.5G     |
| GVWR (lbs.)                      | 22,000             | 22,000             | 22,000             |
| Curb Weight (lbs.)               | 17,460 / 17,741    | 18,396 / 18,439    | 18,580† / 18,860†  |
| GAWR Front (lbs.)                | 7,500 / 8,000      | 7,500 / 8,000      | 7,500 / 8,000      |
| GAWR Rear (lbs.)                 | 14,500             | 14,500             | 14,500             |
| GCWR (lbs.)                      | 26,000             | 26,000             | 26,000             |
| Exterior Length                  | 33'3"              | 36'1"              | 36'7"              |
| Exterior Height**                | 12'9"              | 12'9"              | 12'9"              |
| Exterior Width                   | 8'4"               | 8'4"               | 8'4"               |
| Sleeping Capacity                | 5                  | 5                  | 5                  |
| Interior Width                   | 8'                 | 8'                 | 8'                 |
| Interior Height                  | 7'1"               | 7'1"               | 7'1"               |
| Fuel Capacity (gal.)             | 75                 | 75                 | 75                 |
| Alternator Amps                  | 130                | 130                | 130                |
| Fresh Water Capacity (gal.)      | 60                 | 58                 | 52                 |
| Grey/Waste Water Capacity (gal.) | 42 / 47            | 47 / 42            | 42 / 47            |
| Water Heater Capacity (gal.)     | 6/10               | 6/10               | 10                 |
| LP Gas Capacity (lbs.)           | 85                 | 85                 | 85                 |
| Furnace Rating (x1000) BTU       | 34                 | 34                 | 34                 |

† = Estimated

\*\* Includes clearance for roof A/C

**GVWR (Gross Vehicle Weight Rating):** The maximum permissible weight of the unit, including the UVW plus all fluids, cargo, optional equipment and accessories. For safety and product performance, do not exceed the GVWR.

**CW (Curb Weight):** The weight of the unit without factory or dealer installed options, plus allowance for the weight of full fuel capacity. The "payload capacity" for all other fluids, cargo, occupants, optional equipment and accessories can be determined by subtracting the CW from the GVWR.

**GAWR (Gross Axle Weight Rating):** The total weight each front/rear axle, suspension and tire system is designed to carry. When loading the unit, care should be taken to balance cargo weight in consideration of the GAWRs.

**GCWR (Gross Combined Weight Rating):** The maximum total weight of the loaded unit, plus a tow vehicle. This includes the weight of both the unit and tow vehicle, fuel for each, all other fluids, cargo, occupants, optional equipment and accessories.

**Wider Widths:** Numerous Coachmen floorplans feature the "wide body" design concept, which gives you significantly enhanced interior living space and innovative floorplans.

In making your purchase decision, you should be aware that a few states restrict access on some or all roads within the state to vehicle with a maximum 96" width, although special road usage permits may be available. Vehicles up to 102" in width are permitted in the vast majority of states. You should confirm the road usage laws in the states of interest to you before making your purchase decision. If width is of concern to you, we invite you to consider the broad array of other Coachmen models offered in the standard 96" width.

**IMPORTANT NOTE:** All capacities are approximate, and all dimensions are nominal. Coachmen motorhomes are designed to allow for a wide variety of uses, extended trips with two people or short trips with multiple people. Accordingly, each unit allows ample room for sleeping, seating, fluids and cargo. While the customer is the beneficiary of this design, the customer also bears the responsibility to select the proper combination of passengers, cargo, load, and tow vehicle without exceeding the chassis weight capabilities. Consumer may need additional braking capacity to tow loads greater than 1,000 pounds.

Seat belts should always be worn for passenger safety. Seat belts are provided at most locations to allow convenience in selecting which seat to occupy. However, it is not intended that all seating positions equipped with a seat belt may be occupied while the vehicle is in motion, without regard to other weight factors.

All Coachmen motorhomes are designed to ensure that the number of passengers allowed while the vehicle is in motion will always at least equal the stated sleeping capacity. Though extra seat belts may be provided, for your safety and the proper operation of your vehicle, limit your passengers to the number allowed by the Net Carrying Capacity of your vehicle.

All information contained in this brochure is believed to be accurate at the time of publication. However, during the model year, it may be necessary to make revisions and Coachmen reserves the right to make all such changes without notice, including changes in prices, colors, materials, equipment and specifications, as well as the addition of new models and the discontinuance of models shown in this brochure. Therefore, please consult with your Coachmen dealer and confirm the existence of any materials, design or specifications that are material to your purchase decision.

# EPIC™



## QUALITY BY DESIGN

Coachmen RV is committed to providing a high quality, reliable, and innovative product. That's why Coachmen designs quality into our products up-front, through computer aided design and analysis software. This helps to assure appropriate weight distributions, structural integrity, alignment of the various parts and components and overall reliability of the design.

Our attention to quality does not stop on the computer screen as all of our major product designs undergo rigorous road tests, rain booth testing, complete compliance audits for all codes, standards and safety related items, and comprehensive product audits.

Coachmen designs, builds and markets a superior product for reasons that may not always be easy to see, however are very easy to appreciate down the road. Our quality equates to high value, which can be critical to your long-term satisfaction.

## ASK YOUR DEALER ABOUT THESE COACHMEN EXCLUSIVE DESIGN FEATURES



1. Store Rite™ baggage compartments are a seamless one-piece roto-cast structure that provides a secure place for your gear.



2. Our easy to use Water Works™ Utility Panel with large dials, simply displays how to fill, drain, and winterize your RV. No lengthy explanations or wordy booklet are necessary. Another Coachmen exclusive is the No-Mess™ Termination system. This easy to swivel boom arm provides a convenient storage location for the termination hose. Your storage bay stays cleaner and the hose can remain connected after use.



3. The Sight Rite™ lower dash cowl inclines 20 degrees to appreciably increase visibility and reduce front blind spots.



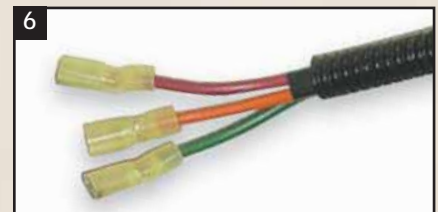
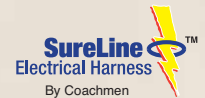
4. All Coachmen Motorhomes utilize Duratube™ full length copper LP lines with double flared ends to ensure a tight seal and years of corrosion free use. We also run our copper lines, protected by an autoloom sleeve, through the frame where they are protected.



5. Coachmen's Even Cool™ air conditioning system is ducted through the crowned roof, and utilizes AMOCO® insulated ductwork with radiused corners to provide for maximum cooling efficiency.



6. Coachmen's SureLine™ Electrical Harness provides color coded wiring and specific wiring schematics for easy serviceability. High quality automotive electrical connectors and autoloom protective covering make for a reliable and durable harness. The wires are grouped together and neatly tucked into the framework under the coach, safe from road debris.





## TAKE A CLOSER LOOK AT COACHMEN QUALITY AND CONSTRUCTION

1. To eliminate air and water leaks, as well as windshield flutter, we direct bond our windshield with an automotive sealant.
2. Easy access to your engine compartment is no problem with our wide hood opening.
3. We use a very heavy gauge fiberglass cap to minimize the potential for cracking or damage from road hazards.
4. The Sight Rite™ dash cowl is inclined to increase your line of vision and reduce front blind spots.
 
5. A 27" overhead flatscreen TV is securely screwed into tubular aluminum framing and tucked up into the front cap for long term durability and safety.
6. The overhead windshield wipers are mounted up high and out of the way to minimize any obstruction of view. They also offer superior water removal and a high line look.
7. The steel frame floor provides a crash barrier and a strong base to mount seat belts and pilot chairs.
8. Pre-formed, high strength, steel trusses assure a solid foundation to build upon.
9. Urethane "Hot Melt" laminated floors create a terrific barrier from road noise and heat.
10. All cabinets and tables are mounted to electro galvanized steel backers in ceilings and sidewalls to assure years of rattle free use.
11. Tubular aluminum cage construction of our roof and sidewalls provides great strength without adding unnecessary top-heavy weight. This improves handling and fuel efficiency.
12. Coachmen's Even Cool™ air conditioning system is ducted through the crowned roof, and utilizes AMOCO® insulated ductwork with radiused corners to provide for maximum cooling efficiency.
 
13. All roofs are vacubond laminated with a crown for controlled water run-off and additional strength. The roofs are covered with TPO (thermoplastic olefin). All roof openings are sealed with butyl rubber based sealants that expand and contract with the climate to help prevent leaks.
14. All Store Rite™ outside storage areas are one-piece rotocast compartments, eliminating seams that can leak or break apart.
 
15. Our 2" sidewalls are among the thickest in the Industry. We bond the wall using reactive hot melt urethane lamination with one piece fiberglass, high-grade luan backer, block foam insulation, tubular aluminum framing and an interior panel.
16. Two-piece stamped aluminum baggage doors allow for easy access to the large, basement-style storage areas.
17. Alcoa aluminum rims and the sizeable 22 1/2" tires add a sleek automotive look as well as a better ride to the Epic.



## DISCOVER THE COACHMEN ADVANTAGES

### SERVICE AFTER THE SALE

Industry Leading Buckstopper™ Warranty – Coachmen's exclusive Buckstopper™ Limited Warranty provides one-year coverage on most parts, components and appliances. Coachmen stands behind their product and is supported by a network of over 300 service centers.

### Two Year Structural & Major Components Manufacturer's Warranty –

Coachmen provides a two-year structural and major components manufacturer's warranty, along with a complete written Warranty Summary Guide, for your peace of mind.

### Comprehensive Owner's Information–

For your convenience we offer published materials on key equipment and options, as well as information pertaining to the function of important components. We also offer a true Trouble Shooting and Maintenance Guide for the simple answers to frequently asked questions.



### Toll Free Service Numbers –

Our toll free phone numbers provide you with direct access to a Coachmen RV Service Representative.

### Dealer Support Tools –

Coachmen makes sure that their dealers are well equipped and trained to service your needs with: Systems Manuals, PDI Manuals, Electronic Parts Catalogs, Coach-Link™ "On-Line" Electronic Dealer Communication System and continual service training.

### Service Support Center Web Site –

Coachmen provides you access to key information 24 hours a day through the Internet. On-line you can find a Service Dealer Locator, Maintenance Information, Trouble Shooting Information, Product Warranty Information, Customer "E-Assistance", Frequently Asked Questions (FAQ's) and Publications ordering, dating back to 1972 models.

### Priority Parts Ordering –

Coachmen provides a program for overnight parts shipment in critical repair situations.

### COACHMEN CARAVAN CAMPING CLUB™

Coachmen Caravan Camping Club is your ticket to making friends for life. Share old stories and make new, in the company of fellow Coachmen Caravan members. With the purchase of a Coachmen RV, you are invited to join one of the nation's largest manufacturer sponsored RV clubs with a FREE 1st year membership.



As part of the Coachmen Caravan family, you will receive incredible membership benefits that will help to ensure your safety and enjoyment throughout your RV experiences. Enjoy your Coachmen RV more with the Coachmen Caravan Camping Club.



Leader to the Great Outdoors®

Coachmen Recreational Vehicle Company, LLC ■ P.O. Box 30 Middlebury, IN 46540 ■ P.O. Box 948, Fitzgerald, GA 31750

Visit our website at: [www.coachmenrv.com](http://www.coachmenrv.com)

©2005 Coachmen Recreational Vehicle Company, LLC - All rights reserved. Litho in USA 6/05

