

BEAVER®



# MONTEREY BEAVER® 2006

*One coach at a time. Yours.™*



MONTEREY 2006





*Beau. Bello. Bonito. Beautiful.*

Any way you translate it, one thing's for sure — you're going to fall in love with the new 2006 Monterey. This is where impressive power and exquisite luxury come together with remarkable value, giving you a coach that's distinctively yours and decidedly within reach. Behind the wheel, you'll experience the incomparable ride and handling of the Roadmaster M-Series chassis

with a Caterpillar® 350 HP C9 engine and the option to upgrade to 400 HP. In the living areas, you'll enjoy legendary Beaver craftsmanship and countless residential touches. Yes, from your first glimpse of the lustrous, full-body paint, the Monterey will steal your heart away. We cordially invite you to take a closer look at one of the most beautiful motorcoaches on the road today.



*One coach at a time. Yours.™*

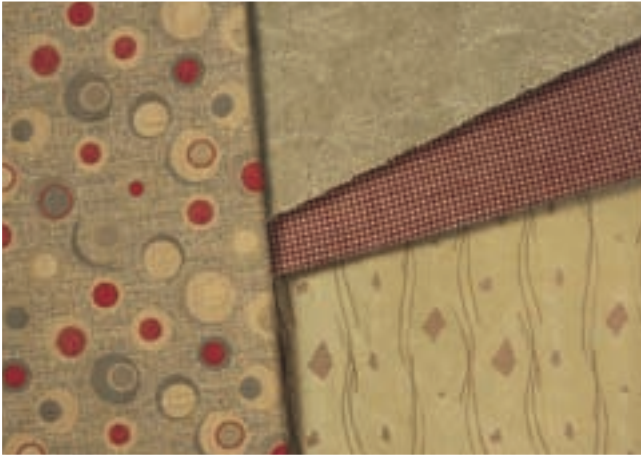
*Monterey*



40 Laguna IV shown in Cabernet II decor with Rustic Cherry cabinetry.

## **WE'RE TAKING SPACIOUSNESS TO NEW HEIGHTS.**

The 2006 Monterey greets you with its remarkably spacious interior, featuring a new interior height of 84". That means you have a full seven feet from floor to ceiling — a difference you'll truly appreciate. Other highlights include the stunning cabinetry with raised panel hardwood doors and the decorative hardwood slide-out fascia trim. You'll enjoy gleaming solid surface countertops throughout the coach, as well as beautiful ceramic tile and plush carpeting.



CRIMSON ECLIPSE

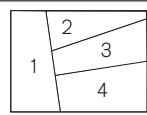


CABERNET II

## A PERFECT MATCH FOR EVERY PERSONALITY.

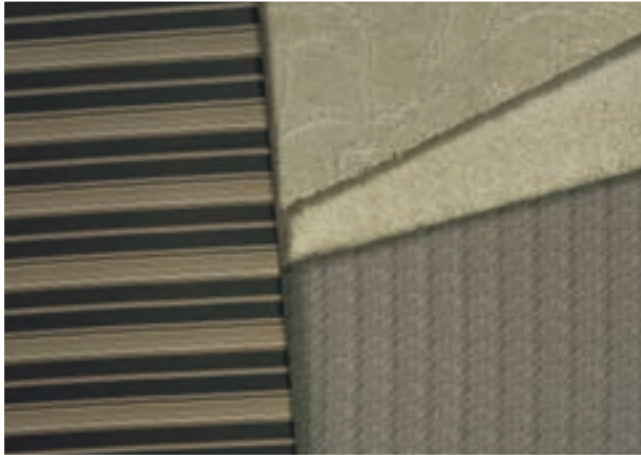
Whether your tastes run from the traditional to the adventurous, our expert designers have assembled a color scheme that's right for you. No matter which one you choose, you'll enjoy a distinctive decor with plush fabrics, carpet and upholstery, as well as a uniquely durable exterior finish, featuring the rich luster of our deluxe full-body paint.

- 1. DINETTE
- 2. CARPET
- 3. SOFA
- 4. BEDSPREAD



## CRAFTSMANSHIP FROM START TO FINISH.

You'll customize your Monterey with your choice of these four distinctive wood selections. At Beaver, our cabinet shop is comprised of nearly 80 highly skilled craftspeople with a combined total of 350 years of cabinetmaking and woodworking experience. We're dedicated to Old World craftsmanship and hand select our hardwoods. Stain is never used – instead, the natural tones and grain are highlighted – giving you a remarkable consistency throughout the coach. Our hardware is also top-of-the-line and includes low-friction roller drawer guides, allowing full use of the drawers.



*BLACKSTONE*



*EVERGLADES II*



*Rift White Oak*



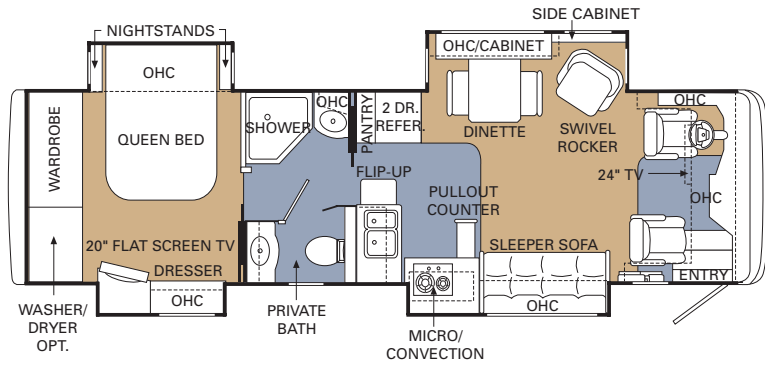
*Rustic Cherry*



*Tight Knot Walnut*



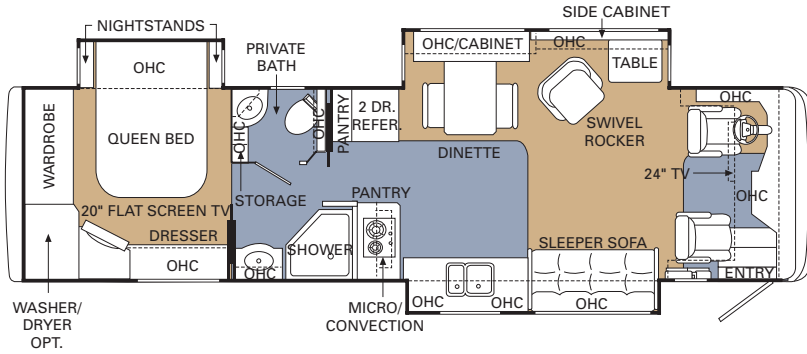
*Maple*



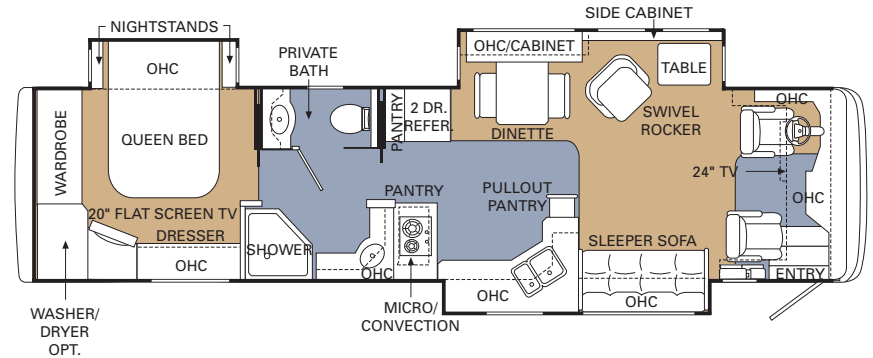
34 BAYVIEW IV

OPTIONS

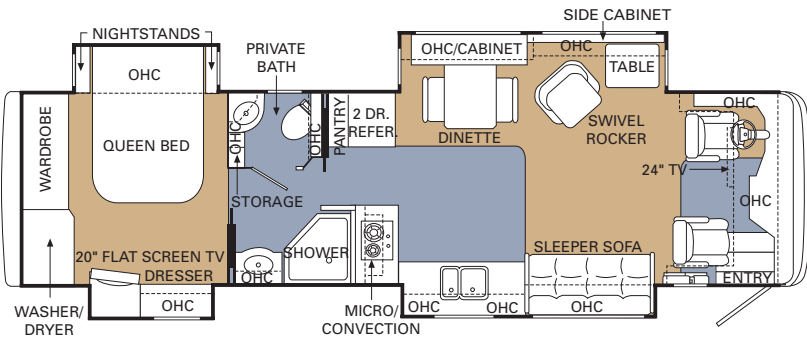
- › King Bed
- › Roadside: OptimaLeather™ Euro-Recliner with Heat, Massage and Ottoman
- › OptimaLeather™ Recliner
- › Curbside: OptimaLeather™ Loveseat with Drawer
- › OptimaLeather™ Sofa with Drawer
- › Fabric Magic Bed Sofa



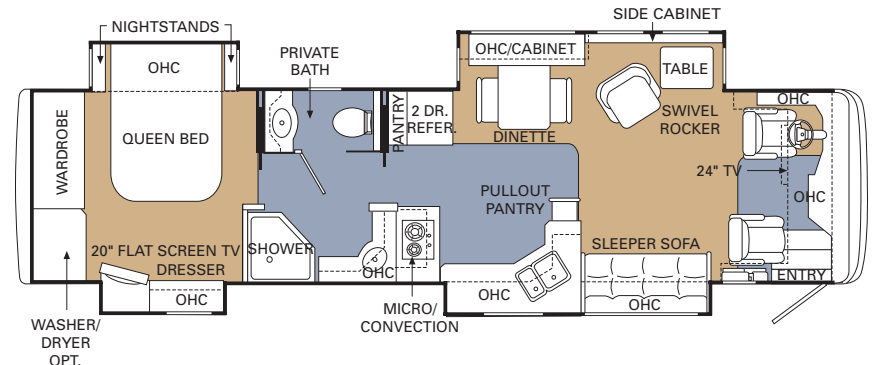
36 VENTURA III



38 HUNTINGTON III

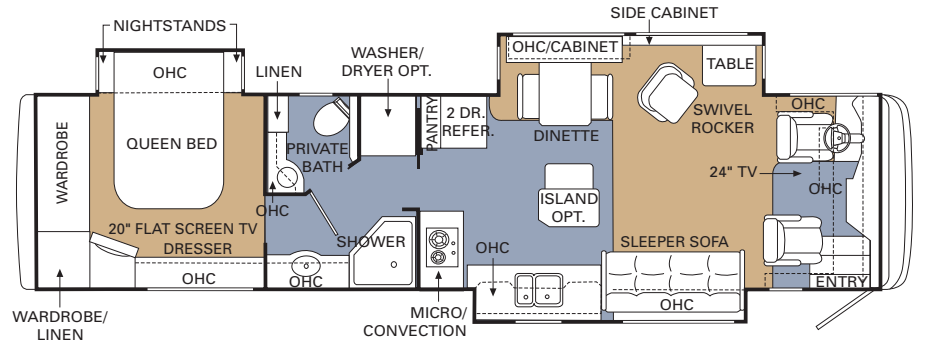


36 VENTURA IV

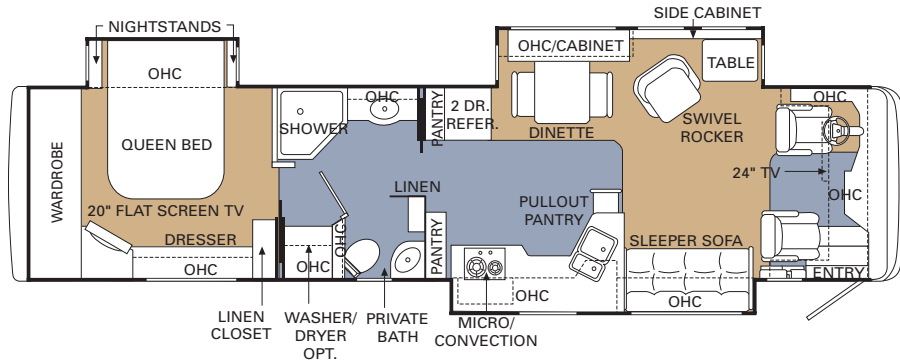


38 HUNTINGTON IV

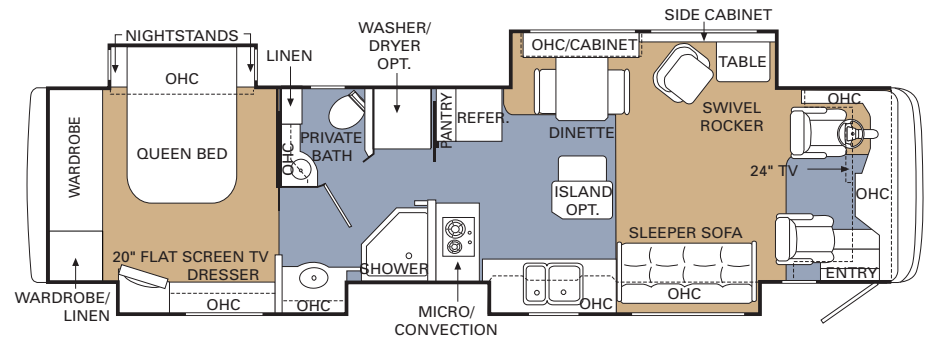
- › OptimaLeather™ Magic Bed Sofa
- › Fabric Hide-a-Bed Sofa with Air Mattress
- › OptimaLeather™ Hide-a-Bed Sofa with Air Mattress
- › Booth Dinette
- › Kitchen Island Cabinet (40 Pacifica III, IV, 40 Montclair IV)
- › Roadside: Wraparound Computer Table (Requires Recliner)
- › Bathtub



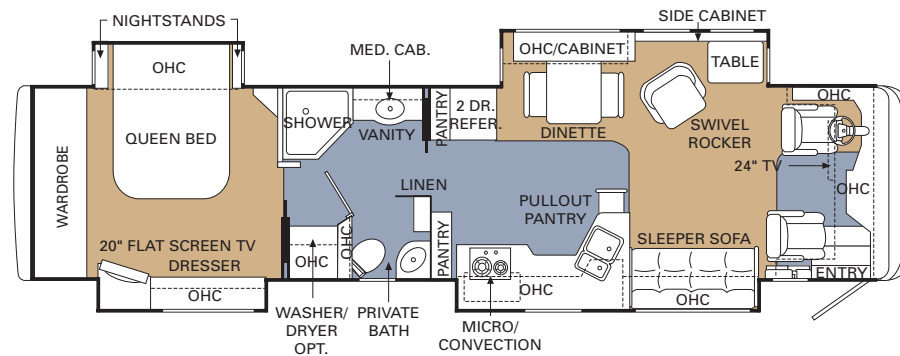
40 PACIFICA III



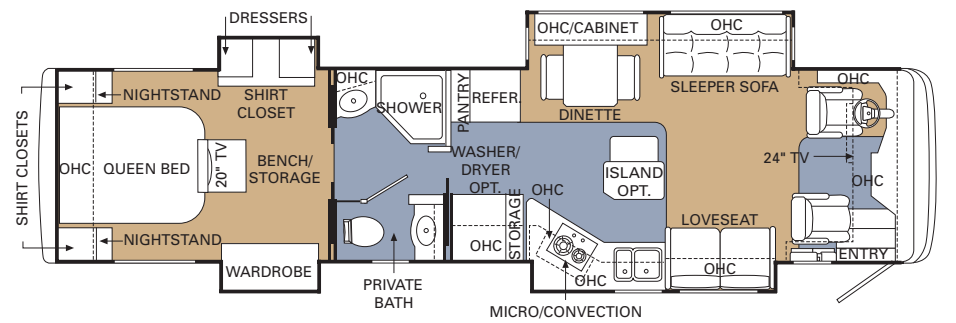
40 LAGUNA III



40 PACIFICA IV



40 LAGUNA IV



40 MONTCLAIR IV

BODY CONSTRUCTION			OPTIONS	
FEATURES	<ul style="list-style-type: none"> <li>› Aluminum Framed Superstructure</li> <li>› Seamless One-Piece Molded Crowned Fiberglass Roof</li> <li>› All Season Foam Insulated Roof</li> <li>› Laminated Gel Coat Fiberglass Sidewalls</li> <li>› Aluminum Framed Laminated Floor on Steel Trusses</li> <li>› Foam Insulated Underbelly</li> </ul>	<ul style="list-style-type: none"> <li>› Deluxe Full-Body Paint</li> <li>› One-Piece Windshield</li> <li>› Chrome Power Controlled Heated Exterior Mirrors</li> <li>› Driving Lights</li> <li>› New Style Recessed Side Docking Lights</li> <li>› Roof-Mounted Dual Trumpet Air Horns</li> <li>› Insulated Aluminum Baggage Doors</li> </ul>	<ul style="list-style-type: none"> <li>› Lined Storage Compartments</li> <li>› Interlocking Aluminum Framed Slide-Out Houses</li> <li>› Rear Ladder</li> <li>› Full Length "Beaver" Mud Flap</li> </ul>	<ul style="list-style-type: none"> <li>› 3M Film Front Mask</li> <li>› Storage Bay Slide-Out Tray (One Side)</li> <li>› Storage Bay Slide-Out Tray (Full Pass-Through) (N/A: Bayview and Ventura)</li> <li>› Exterior Sunscreens</li> <li>› Insulated Aluminum Side-Hinged Baggage Doors under Passenger Side Front Slide-Out</li> </ul>
CHASSIS/ENGINE/SUSPENSION			OPTIONS	
FEATURES	<ul style="list-style-type: none"> <li>› Roadmaster M-Series Chassis</li> <li>› CAT® 350 HP C-9 Engine and Allison® 3000 MH 6-Speed Transmission with Electronic Shifter</li> <li>› Torque (@ 1,400 RPM): 1,100 lbs./ft. Max. Net</li> <li>› Engine Displacement: 537"/8.8L</li> <li>› Dual Fuel Fill</li> <li>› 160 Amp Alternator</li> </ul>	<ul style="list-style-type: none"> <li>› Rear Axle Ratio: 4.30:1</li> <li>› Tires: 295/80R/22.5</li> <li>› Polished Aluminum Wheels</li> <li>› Full-Cushion Air Glide Suspension with Eight Air Bags and Eight Shock Absorbers</li> <li>› Automatic Traction Control</li> <li>› Anti-Lock Braking System with Full Air Brakes (Drum)</li> </ul>	<ul style="list-style-type: none"> <li>› Auto Slack Adjusters</li> <li>› Pac Brake</li> <li>› Pre-Wire for Supplemental Braking System</li> <li>› Engine Block Heater</li> <li>› Hydraulic Leveling System</li> <li>› 10,000 Lb. Hitch Receiver and 7/4-Way Trailer Plug</li> </ul>	<ul style="list-style-type: none"> <li>› CAT® C-9 400 HP Engine and Allison® 3000 MH 6-Speed Transmission with Electronic Shifter; 1,100 lbs./ft. Torque Max. Net @ 1,400 RPM; 537"/8.8L Cu. In. Displacement</li> <li>› Dual Leveling (Air/Hydraulic)</li> <li>› Air Leveling</li> </ul>
COCKPIT			OPTIONS	
FEATURES	<ul style="list-style-type: none"> <li>› Fiberglass Automotive Dash with Silver Circuit Board Instrumentation Panel, Spun Aluminum Gauges with Black Lettering and Gun Metal Bezels</li> <li>› In-Dash AM/FM Stereo with CD/Cassette Player</li> <li>› Rear Vision System with Color Monitor</li> </ul>	<ul style="list-style-type: none"> <li>› Aladdin™ Video Coach System with Integrated Compass and Temperature Gauge</li> <li>› CB Radio Prep</li> <li>› Manual Privacy Drapes</li> <li>› Carefree® Scissor Sunvisors</li> <li>› Adjustable Accelerator and Brake Pedals</li> <li>› VIP Lighted Smartwheel® with Controls for Windshield Wipers, ICC and Cruise Control</li> </ul>	<ul style="list-style-type: none"> <li>› Audible Turn Signals</li> <li>› OptimaLeather™ 6-Way Power Pilot and Co-Pilot Seats</li> <li>› 12V and 110V Outlet and Phone Jack in Dash Area</li> <li>› Carpeted Pilot and Co-Pilot Floor Mats</li> </ul>	<ul style="list-style-type: none"> <li>› Power Footrest on Co-Pilot Seat</li> <li>› Power Privacy Drapes</li> <li>› Power Sunvisors with Driver and Passenger Switches</li> <li>› Six-Disc CD Changer (Deletes Cassette)</li> <li>› CB Radio with Antenna</li> <li>› Sirius Satellite Radio System (Requires Subscription)</li> </ul>
APPLIANCES AND ACCESSORIES			OPTIONS	
FEATURES	<ul style="list-style-type: none"> <li>› Two-Door Refrigerator with Ice Maker and Raised Panel Doors</li> <li>› Recessed High-Output 2-Burner Cooktop</li> <li>› Spacesaver Convection Microwave with Touch Control</li> <li>› Manual TV Antenna</li> <li>› Prep for Satellite Receiver, Front and Bedroom</li> <li>› 24" Flatscreen TV with Remote in Living Area</li> </ul>	<ul style="list-style-type: none"> <li>› 20" Flatscreen TV with Remote in Bedroom</li> <li>› 20" LCD TV with Remote in Bedroom (40 Montclair IV Only)</li> <li>› Stereo VCR</li> <li>› Bedroom Speakers with Switch for Radio Cut-Off</li> <li>› Combination Washer/Dryer Prep</li> </ul>	<ul style="list-style-type: none"> <li>› Combination Washer/Dryer</li> <li>› 32" LCD TV with Remote Control in Living Area</li> <li>› 20" LCD TV with Remote in Bedroom (Std. in 40 Montclair IV)</li> <li>› Norcold® Four-Door Refrigerator with Ice Maker and Raised Panel Doors</li> <li>› Stainless Steel 14 Cu. Ft. Refrigerator with Ice Dispenser</li> <li>› Recessed 17" Cooktop with Oven</li> <li>› Stainless Steel Microwave</li> <li>› Fully Automatic Digital Satellite System</li> </ul>	<ul style="list-style-type: none"> <li>› Fully Automatic In-Motion Digital Satellite System with Receiver in Living Area and Bedroom</li> <li>› Passenger Side Computer Desk with 26" LCD TV in Living Area (40 Pacifica IV Only; Deletes 24" Flat Screen TV in Front Overhead)</li> <li>› Sony Home Theater System with DVD Combo Unit and Flush Speakers (Deletes Standard VCR)</li> <li>› VCR/DVD Combo Unit in Bedroom</li> <li>› Central Vacuum System</li> </ul>



SPECIFICATIONS: STANDARD FEATURES/OPTIONS

INTERIOR			OPTIONS	
FEATURES	<ul style="list-style-type: none"> <li>› Raised Panel Rift White Oak Cabinetry</li> <li>› Lined Cabinet Shelves</li> <li>› Dinette Wall Cabinet with Solid Surface Top</li> <li>› Built-In Storage Area for Kitchen Countertop Covers</li> <li>› Bedroom Dresser (N/A: 40 Montclair IV)</li> <li>› Low-Friction Roller Drawer Guides</li> <li>› Padded Vinyl Ceiling</li> <li>› Solid Surface Countertops Throughout</li> </ul>	<ul style="list-style-type: none"> <li>› Fiberglass Galley Sink</li> <li>› Integrated Solid Surface Sinks in Vanity</li> <li>› Corian® Galley Backsplash Design with Decorative Metal Insert</li> <li>› Corian® Vanity Backsplash Design with Decorative Metal Insert</li> <li>› Day/Night Shades with Blackout in Bedroom</li> <li>› Mini Blinds in Living Room, Kitchen and Bathroom</li> <li>› Vinyl Wallboard Wall Treatment with Chair Rail in Living Area</li> </ul>	<ul style="list-style-type: none"> <li>› Cutting Boards in Kitchen</li> <li>› Plush Carpet in Living Area and Bedroom</li> <li>› Ceramic Tile in Entry, Kitchen and Bath Area</li> <li>› Bedspread with Pillows</li> <li>› Nightstands with Solid Surface Countertops</li> <li>› Decorative Hardware Throughout</li> <li>› Large Pot and Pan Drawer in Kitchen Area</li> <li>› Decorative Hardwood Slide-Out Fascia Trim</li> </ul>	<ul style="list-style-type: none"> <li>› Decors: Crimson Eclipse, Blackstone, Cabernet II, Everglades II</li> <li>› Gloss Finish Cabinetry Choices: Rustic Cherry, Tight Knot Walnut, Maple</li> <li>› Solid Surface Galley Sink</li> <li>› Day/Night Shades in Living Area</li> </ul>
FURNITURE		OPTIONS		
FEATURES	<ul style="list-style-type: none"> <li>› Queen Bed</li> <li>› Curbside: Fabric Sleeper Sofa with Drawer</li> <li>› Curbside: Fabric Loveseat (40 Montclair IV Only)</li> <li>› Roadside: Solid Surface Fixed Living Area Table (N/A: 40 Montclair IV, 34 Bayview IV)</li> <li>› Roadside: OptimaLeather™ Swivel Rocker (N/A: 40 Montclair IV)</li> </ul>	<ul style="list-style-type: none"> <li>› Roadside: Fabric Sleeper Sofa with Drawer (40 Montclair IV)</li> <li>› Side-Slide, Solid Surface Fixed Dining Table with Two Dinette Chairs and Two Folding Chairs</li> </ul>	<ul style="list-style-type: none"> <li>› King Bed</li> <li>› Roadside: OptimaLeather™ Euro-Recliner with Heat, Massage and Ottoman</li> <li>› Roadside: OptimaLeather™ Recliner</li> <li>› Curbside: OptimaLeather™ Loveseat with Drawer (40 Montclair IV Only)</li> <li>› OptimaLeather™ Sofa with Drawer</li> <li>› Fabric Magic Bed Sofa</li> <li>› OptimaLeather™ Magic Bed Sofa</li> </ul>	<ul style="list-style-type: none"> <li>› Fabric Hide-a-Bed Sofa with Air Mattress</li> <li>› OptimaLeather™ Hide-a-Bed Sofa with Air Mattress</li> <li>› Booth Dinette</li> <li>› Kitchen Island Galley Cabinet (40 Montclair IV, 40 Pacifica III, IV)</li> <li>› Roadside: Wraparound Computer Table (N/A: 34 Bayview IV) (Requires Recliner)</li> </ul>
ELECTRICAL SYSTEMS AND LIGHTS			OPTIONS	
FEATURES	<ul style="list-style-type: none"> <li>› 50 Amp 120V Distribution Panel and Cord</li> <li>› Onan® 8.0 kW QD Generator with Hour Meter</li> <li>› 2,000 Watt Pure Sine Wave Inverter with Auto Generator Start and Auto Temperature Start</li> <li>› Computer Hook-Up with Phone Jack at Dinette Area</li> <li>› Decorative Lighting in Bedroom and Living Area</li> <li>› Pilot/Co-Pilot Map Lights</li> <li>› Cosmetic Vanity Light</li> <li>› Recessed Halogen Lighting under Living Room and Dinette Overhead</li> </ul>	<ul style="list-style-type: none"> <li>› Halogen Lighting in Ceiling Throughout</li> <li>› Fluorescent Light in Front of Refrigerator, Bath Area and Bedroom</li> <li>› 120V Outlet in Private Bath</li> <li>› 120V Outlet in Bed Base</li> <li>› 120V Receptacle in Outside Storage Compartment</li> <li>› Porch Light</li> <li>› Lighted Exterior Storage Compartments</li> <li>› Four 6V Deep Cycle Coach Batteries</li> <li>› Two 12V Deep Cycle Chassis Batteries</li> </ul>	<ul style="list-style-type: none"> <li>› Surge Guard™ Automatic Transfer Switch</li> <li>› Multiplex 12V Wiring for All Lighting Throughout Interior of Coach</li> <li>› Locking Battery Disconnect Switch inside Coach</li> <li>› Battery Disconnect Switch in Battery Compartment</li> <li>› Solar Panel with Regulator</li> </ul>	<ul style="list-style-type: none"> <li>› Power Cord Reel</li> </ul>

PLUMBING AND LP SYSTEMS			OPTIONS	
FEATURES	<ul style="list-style-type: none"> <li>› Water Purifier in Ice Maker Line</li> <li>› Manifold Water Control System</li> <li>› Insulated Systems Compartment with Easy Access to Hook-Ups</li> <li>› Water Pump Switches in Galley, Bath and Water Bay</li> </ul>	<ul style="list-style-type: none"> <li>› China Toilet</li> <li>› Fiberglass Shower</li> <li>› Black Holding Tank Rinsing System</li> <li>› Water Sprayer in Outside Bay</li> <li>› Kitchen Faucet with Pullout Sprayer</li> </ul>	<ul style="list-style-type: none"> <li>› Bathtub (38 Huntington III and IV, 40 Laguna III and IV, 40 Pacifica III)</li> <li>› Electronic Automatic Winterization</li> </ul>	
HEATING, VENTS AND AIR CONDITIONING			OPTIONS	
FEATURES	<ul style="list-style-type: none"> <li>› 10-Gallon LP Gas/Electric Water Heater with Electronic Ignition</li> <li>› 42,000 BTU Electronic Ignition Furnace</li> <li>› Two Low Profile Duo Therm 15,000 BTU Ducted Low Profile Roof Air Conditioners with Ceiling Ducting and Heat Pumps</li> </ul>	<ul style="list-style-type: none"> <li>› Electronic AC/Heat Climate Control System</li> <li>› Dash Heating and Air Conditioner System with Defroster</li> <li>› 12V Attic Fan with Rain Sensor and Wall Switch in Kitchen and Private Lavatory</li> </ul>	<ul style="list-style-type: none"> <li>› Hydro-Hot™ Hydronic Heating System 50,000 BTU, 5 Heat Exchangers with Chrome Exhaust Tip</li> <li>› Engine Pre-Heat (Requires Hydro-Hot™ Option)</li> </ul>	
WINDOWS, DOORS AND AWNINGS			OPTIONS	
FEATURES	<ul style="list-style-type: none"> <li>› Flush-Mount Radius Dual Pane Safety Glass Dark Tinted Windows</li> <li>› Front Entry Door with Removable Screen</li> <li>› Tinted Skylight in Bathroom with ABS Shroud</li> </ul>	<ul style="list-style-type: none"> <li>› Slide-Out Topper Awnings</li> <li>› Patio Awning with Color-Coordinated Hardware</li> </ul>	<ul style="list-style-type: none"> <li>› Keyless Entry System with Pocket Remote</li> <li>› Remote Controlled Girard® Automatic Awning with Wind Sensor</li> <li>› Carefree® Eclipse Automatic Patio Awning</li> <li>› Automatic Front Door Awning</li> <li>› Bedroom Window Awnings</li> <li>› Mirage Automatic Patio Awning</li> <li>› Window Awning</li> </ul>	
SAFETY			OPTIONS	
FEATURES	<ul style="list-style-type: none"> <li>› Back-Up Alarm</li> <li>› Fire Extinguisher</li> <li>› Deadbolt Lock on Entrance Door</li> <li>› Lighted Interior and Exterior Grab Handle</li> </ul>	<ul style="list-style-type: none"> <li>› 120V GFI Protected Circuit (Kitchen, Bath, Exterior)</li> <li>› LP Gas Detector</li> <li>› Smoke Detector</li> <li>› Carbon Monoxide Detector</li> </ul>	<ul style="list-style-type: none"> <li>› Integrated Driver and Passenger Three-Point Seat Belts</li> <li>› Third Brake Safety Light</li> <li>› Egress Window(s)</li> </ul>	<ul style="list-style-type: none"> <li>› Deluxe Security Alarm System</li> </ul>

## SPECIFICATIONS: WEIGHTS & MEASUREMENTS

<b>WEIGHTS</b>	34 Bayview IV	36 Ventura III	36 Ventura IV	38 Huntington III	38 Huntington IV	40 Laguna III	40 Laguna IV	40 Pacifica III	40 Pacifica IV	40 Montclair IV
Gross Vehicle Weight Rating (Lbs.)	35,800	35,800	35,800	35,800	35,800	35,800	35,800	35,800	35,800	35,800
Gross Combined Weight Rating <sup>1</sup> (Lbs.)	45,800	45,800	45,800	45,800	45,800	45,800	45,800	45,800	45,800	45,800
Front Gross Axle Weight Rating (Lbs.)	12,800	12,800	12,800	12,800	12,800	12,800	12,800	12,800	12,800	12,800
Rear Gross Axle Weight Rating (Lbs.)	23,000	23,000	23,000	23,000	23,000	23,000	23,000	23,000	23,000	23,000
<b>MEASUREMENTS</b>	34 Bayview IV	36 Ventura III	36 Ventura IV	38 Huntington III	38 Huntington IV	40 Laguna III	40 Laguna IV	40 Pacifica III	40 Pacifica IV	40 Montclair IV
Wheelbase	196"	220"	220"	244"	244"	268"	268"	268"	268"	268"
Overall Length	34' 10"	36' 10"	36' 10"	38' 10"	38' 10"	40' 10"	40' 10"	40' 10"	40' 10"	40' 10"
Overall Width	102"	102"	102"	102"	102"	102"	102"	102"	102"	102"
Overall Height <sup>2</sup>	12' 5"	12' 5"	12' 5"	12' 5"	12' 5"	12' 5"	12' 5"	12' 5"	12' 5"	12' 5"
Interior Width	97.5"	97.5"	97.5"	97.5"	97.5"	97.5"	97.5"	97.5"	97.5"	97.5"
Interior Height	84"	84"	84"	84"	84"	84"	84"	84"	84"	84"
<b>TANK CAPACITIES</b>	34 Bayview IV	36 Ventura III	36 Ventura IV	38 Huntington III	38 Huntington IV	40 Laguna III	40 Laguna IV	40 Pacifica III	40 Pacifica IV	40 Montclair IV
Water Heater (Gal.)	10	10	10	10	10	10	10	10	10	10
Gray Tank (Gal.)	58	58	58	58	58	58	58	58	58	58
Black Tank (Gal.)	58	58	58	58	58	58	58	58	58	58
Fresh Tank (Gal.)	100	100	100	100	100	100	100	100	100	100
Fuel Tank (Gal.)	109	109	109	109	109	109	109	109	109	109
LP Tank <sup>3</sup> (Gal.)	35	35	35	35	35	35	35	35	35	35

<sup>1</sup> Towing capacity is limited by GCWR; your vehicle's towing capacity is the difference between the GCWR and the actual vehicle weight, including all water, fuel, passengers and cargo. Your towed vehicle should be equipped with auxiliary brakes if the weight of the towed vehicle exceeds 1,000 lbs. Consult your Owner's Manual for further towing information.

<sup>2</sup> Height measurements include roof satellite.

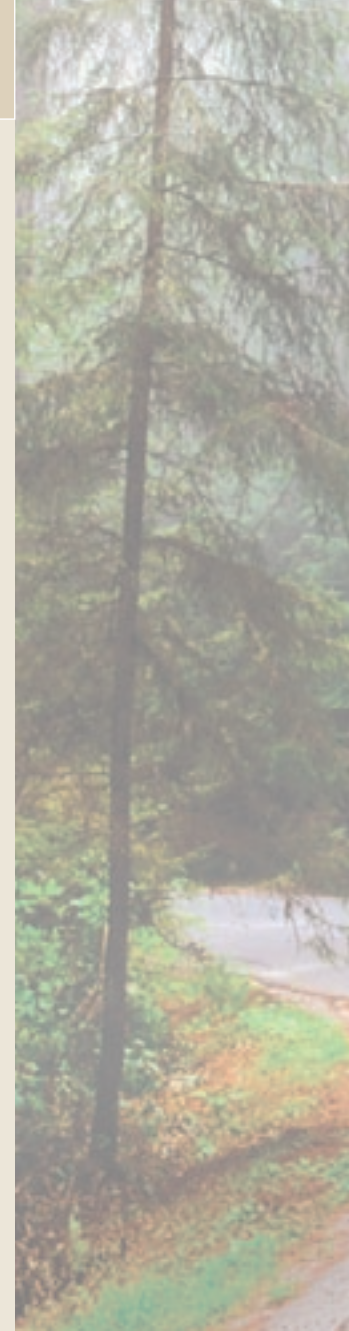
<sup>3</sup> Actual filled LP capacity is 80% of listing due to safety shut-off required on tank.

All tank capacities are estimated based upon calculations provided by the tank manufacturers and represent approximate capacities. The actual "usable capacity" may be greater or less than the estimated capacities based upon fabrication and installation of the tanks.

The actual overall length of the recreational vehicle may differ from that indicated in the brochure due to variances in the manufacturing process and/or installed components. The actual length may be greater or less than that indicated.

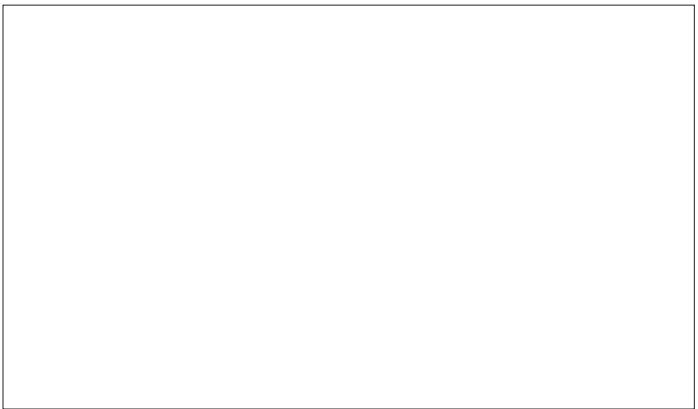
Due to the large variety of options and floorplan arrangements available to our customers, actual weights for each unit may differ. Beaver Motor Coaches provides a weight sticker on each unit we produce which includes that unit's tank capacities and approximate weight. Consult your local Beaver Motor Coaches dealer for unit availability and further information. The information printed in this brochure reflects product design, fabrication, and component parts at the date of printing. The manufacturer reserves the right, at any time, to make changes in product design, material or component specifications as its sole option, without notice. This includes the substitution of components of a different brand or trade name, which will result in comparable performance.

Component part and appliance manufacturers issue limited warranties covering those portions of the recreational vehicle not covered by the Limited Warranties issued by Monaco Coach Corporation. To learn which specific component parts and appliances are excluded from the Limited Warranties issued by Monaco Coach Corporation, please contact your selling dealership or Monaco Coach Corporation directly, or review the warranty packet inside the recreational vehicle. All information printed in this brochure is subject to change after the date of printing. Some features shown or mentioned in this brochure are optional and may only be available in selected floorplans. Photographs may show props or decorations that are not standard equipment on Beaver Motor Coach models. Beaver Motor Coaches, the Beaver logo and its design, are registered trademarks. All other products and company names are trademarks and/or registered trademarks of their respective holders.



**BEAVER 2006**  
**MONTEREY**

THE BEAVER LINE OF MOTOR COACHES:  
MONTEREY • PATRIOT® • MARQUIS®



*One coach at a time. Yours.™*

**BEAVER MOTOR COACH**

91320 Coburg Industrial Way, Coburg, OR 97408

[www.beavermotorcoaches.com](http://www.beavermotorcoaches.com)

Daily factory tours

**(800) 634-0855**

---



---

MONACO COACH CORPORATION

Monaco is traded on the New York Stock Exchange under the listing MNC.

© 2005, Monaco Coach Corporation Litho in USA

**0605 NPN:BROB MONT**